

# COUGAR RESTROOM

PRECAST PRODUCER:



Huffcut Concrete  
4154 123rd Street  
Chippewa Falls, WI 54729  
PH: (715)723-7446  
www.Huffcut.com

PRECAST ENGINEER:

SIGNATURE AND SEAL

ISSUED FOR / ISSUE DATE

NOT FOR  
CONSTRUCTION

COUGAR RESTROOM

COVERSHEET

SHEET TITLE:

REVISIONS

DRN BY: JS CHK BY: CW

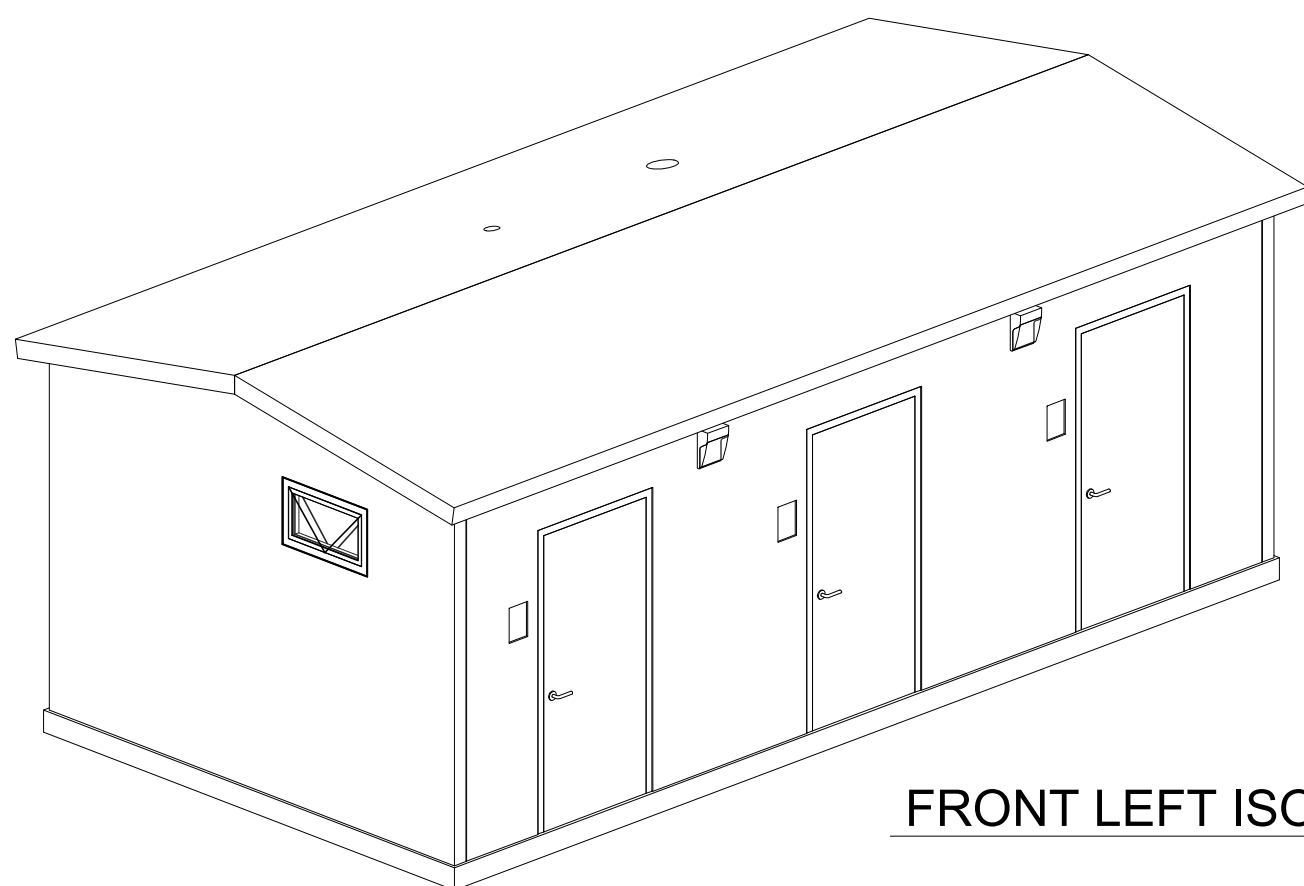
TEMPLATE VERSION 1.0

PROJECT NO: 11784  
SHEET DATE: 09/12/25

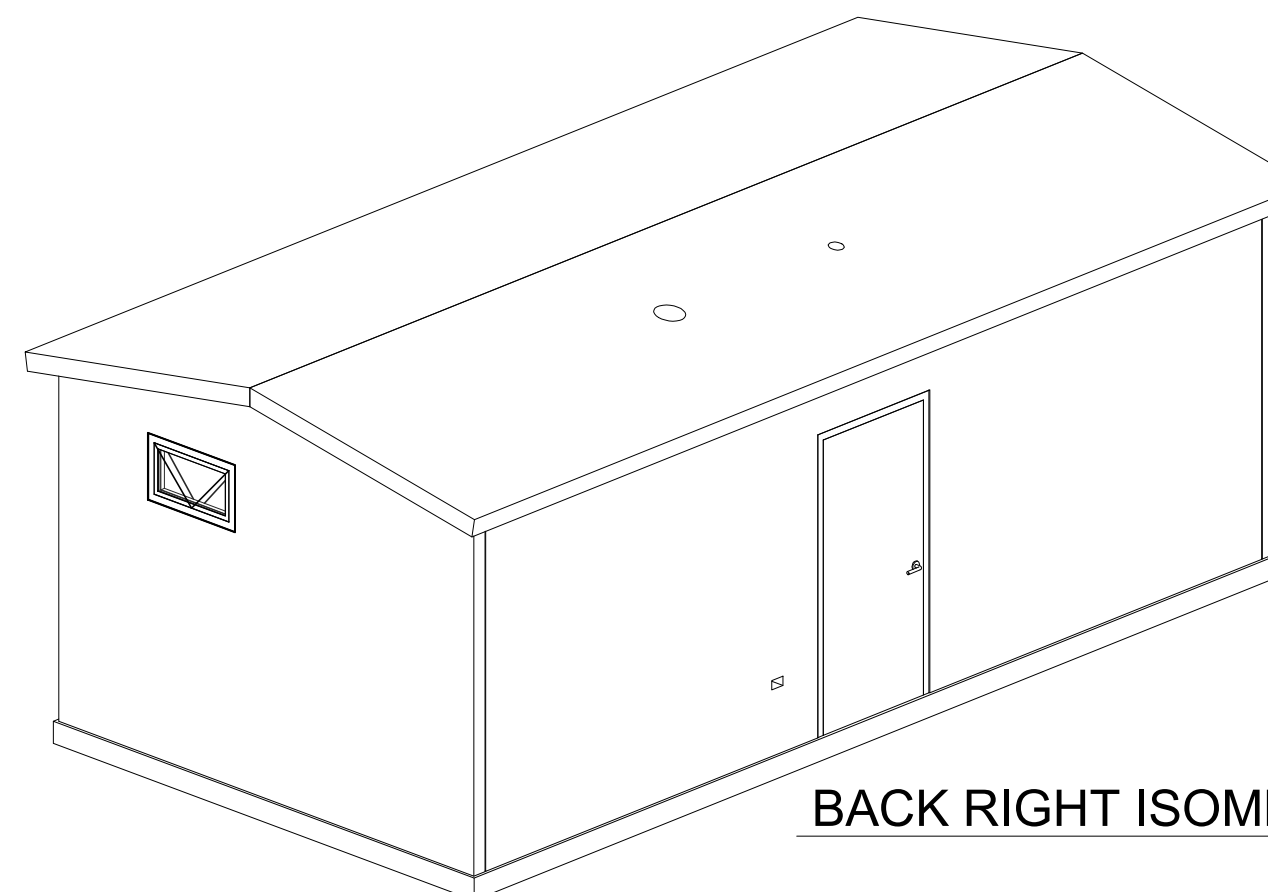
SHEET:

0.00

SHEET INDEX				
Sheet #	Sheet Name	Revision	Description	Rev. Date
0.00	COVERSHEET	2	FOR CONSTRUCTION	11-18-2025
0.01	SCHEDULES	2	FOR CONSTRUCTION	11-18-2025
1.00	FLOOR PLAN, OPENINGS, & DETAILS	2	FOR CONSTRUCTION	11-18-2025
1.01	DETAILS	2	FOR CONSTRUCTION	11-18-2025
2.00	PANEL LAYOUT & ROOF SECTION	2	FOR CONSTRUCTION	11-18-2025
4.00	EXTERIOR ELEVATIONS	2	FOR CONSTRUCTION	11-18-2025
4.01	EXTERIOR ELEVATIONS	2	FOR CONSTRUCTION	11-18-2025



FRONT LEFT ISOMETRIC VIEW



BACK RIGHT ISOMETRIC VIEW

PROJECT CONTACTS:

HUFFCUTT CONCRETE PROJECT MANAGER

PROJECT GENERAL CONTRACTOR

PROJECT ARCHITECT

PROJECT ENGINEER OF RECORD

REVIEWER NOTES

THESE DRAWINGS AND SCHEDULES REPRESENT OUR INTERPRETATION OF THE ARCHITECTURAL AND STRUCTURAL DRAWINGS RECEIVED TO DATE.

FINAL PRODUCT DESIGN, FABRICATION, AND SCHEDULING WILL BE DONE DIRECTLY FROM THESE DRAWINGS. AS SUCH, THESE DOCUMENTS SHOULD BE CAREFULLY AND COMPLETELY CHECKED BEFORE APPROVAL IS GIVEN. ANY CHANGES OR ADDITIONS OCCURRING AFTER FINAL APPROVAL MAY RESULT IN INCREASED COSTS AND SCHEDULE DELAYS. UNVERIFIED ITEMS WILL BE CONSIDERED APPROVED AS DRAWN UNLESS NOTED OTHERWISE AND FABRICATED AS SUCH.

PLEASE VERIFY ALL DIMENSIONS, OPENINGS AND DETAILS, TOP OF FOUNDATION, EXTERIOR ELEVATIONS, BEARING ELEVATIONS, MECHANICAL OPENINGS, STEEL OR CONCRETE BEARING ELEVATIONS AND REVEAL LOCATIONS AND FINISHES.

VERIFY ALL CLOUDED ITEMS PRIOR TO RETURN OF SUBMITTAL

DRAWING NOTES

THESE DRAWINGS WERE DEVELOPED FROM THE INFORMATION CONTAINED IN THE FOLLOWING CONSTRUCTION DOCUMENTS:

- ARCHITECTURAL PLAN SET: \_\_\_\_\_
- STRUCTURAL PLAN SET: \_\_\_\_\_
- ADDENDUM: \_\_\_\_\_

JOBSITE ACCESS NOTES

SELLERS TRUCKS REQUIRE 50'-0" ALL WEATHER ACCESS AROUND EXTERIOR/INTERIOR OF THE BUILDING.

ACCESS AREAS SHALL BE ADEQUATE FOR UNRESTRICTED OPERATION OF SELLERS TRUCKS.

ACCESS/HAUL ROADS BY OTHERS (NOT BY HUFFCUTT CONCRETE). SELLERS TRUCKS TO OPERATE UNDER THEIR OWN POWER.

OBSTRUCTIONS, INCLUDING POWER LINES, WIRES & OBJECTS WHICH ARE HAZARDOUS TO SELLERS TRUCKS & PERSONNEL SHALL BE REMOVED BY BUYER.

DAMAGE TO EXISTING LANDSCAPING, DRIVES, SIDEWALKS, CURBS, FOUNDATIONS, SLABS, UNDERGROUND UTILITIES AND OTHER INSTALLATIONS TO FACILITATE INSTALLATION WILL NOT BE THE RESPONSIBILITY OF HUFFCUTT CONCRETE.

ABBREVIATIONS

@	-	AT	CDR	-	COTTON DUCK REINFORCED	GALV	-	HOT DIP GALVANIZE	OPNG	-	OPENING	TBRE	-	TOP OF BEAM RISER ELEV.	TRE	-	TOP OF RISER ELEV.
∅	-	DIAMETER	CONC	-	CONCRETE	GC	-	GENERAL CONTRACTOR	OPP	-	OPPOSITE	TCE	-	TOP OF COLUMN ELEV.	TTE	-	TOP OF DBL TEE ELEV. (AT GRID)
A.B.	-	ANCHOR BOLT	CONN	-	CONNECTION	INS	-	INSERT	PBE	-	PLANK BEARING ELEV.	TCWE	-	TOP OF CIP WALL ELEV.	TSE	-	TOP OF SPANDREL ELEV.
ARCH	-	ARCHITECTURAL	CONT	-	CONTINUOUS	INSUL	-	INSULATION	PROJ	-	PROJECTION	TCWP	-	TOP OF COLUMN W.P. (AT GRID)	TWE	-	TOP OF WALL ELEV.
BBE	-	BRICK BEARING ELEV.	DBE	-	DECK BEARING ELEV.	INT	-	INTERIOR	ROF	-	RANDOM ORIENTATED FIBER	TECE	-	TOP OF EXISTING COLUMN ELEV.	TYP	-	TYPICAL
BCE	-	BOT. OF COLUMN ELEV.	DIA	-	DIAMETER	JBE	-	JOIST BEARING ELEV.	REQD	-	REQUIRED	TETE	-	TOP OF EXISTING DBL TEE ELEV.	UNO	-	UNLESS NOTED OTHERWISE
BM	-	BEAM	DTBE	-	DOUBLE TEE BEARING ELEV.	JST	-	JOIST	RVL	-	REVEAL	TFE	-	TOP OF FOOTING ELEV.	W/	-	WITH
BOS	-	BOT. OF STEEL	EA	-	EACH	JT	-	JOINT	SGE	-	SLAB ON GRADE ELEV.	TFWE	-	TOP OF FOUNDATION WALL ELEV.	WHE	-	WEST HAUNCH ELEVATION
(B)	-	BOTTOM	EHE	-	EAST HAUNCH ELEVATION	LLH	-	LONG LEG HORIZONTAL	SHE	-	SOUTH HAUNCH ELEVATION	TGBE	-	TOP OF GRADE BEAM ELEV.	WP	-	WORKING POINT
BOT	-	BOTTOM	ELEV	-	ELEVATION	LLV	-	LONG LEG VERTICAL	SIL	-	SUPERIMPOSED LOAD	THE	-	TOP OF HAUNCH ELEV.	WSE	-	WEST STEP ELEVATION
BPE	-	BOT. OF POCKET ELEV.	EP	-	ELECTRO- PLATED	MAX	-	MAXIMUM	SIM	-	SIMILAR	THWP	-	TOP OF HAUNCH W.P. (AT GRID)	WWF	-	WELDED WIRE FABRIC
BRG	-	BEARING	ESE	-	EAST STEP ELEVATION	MIN	-	MINIMUM	SPA	-	SPACES	TLE	-	TOP OF LEDGE ELEV.	ZRC	-	PAINTED W/ ZINC RICH COMPOUND
BSE	-	BOT. OF SPANDREL ELEV.	EXT	-	EXTERIOR	MISC	-	MISCELLANEOUS	SS	-	STAINLESS STEEL	TLWP	-	TOP OF LEDGE W.P. (AT GRID)			
BWE	-	BOT. OF WALL ELEV.	FDN	-	FOUNDATION	NHE	-	NORTH HAUNCH ELEVATION	SSE	-	SOUTH STEP ELEVATION	TOD	-	TOP OF DECK			
C/L	-	CENTERLINE	FFE	-	FINISH FLOOR ELEV.	NSE	-	NORTH STEP ELEVATION	SSBE	-	SOLID SLAB BRG ELEV.	TOS	-	TOP OF STEEL			
CIP	-	CAST IN PLACE CONCRETE	FTG	-	FOOTING	NTS	-	NOT TO SCALE	(T)	-	TOP	TPCE	-	TOP OF PRECAST ELEV.			
CANT	-	CANTILEVER	FTTE	-	FUTURE TOP DBL TEE ELEV.	O/C	-	ON CENTER	TATE	-	TOP OF ARCH TRIM ELEV.	TPE	-	TOP OF PIER ELEV.			

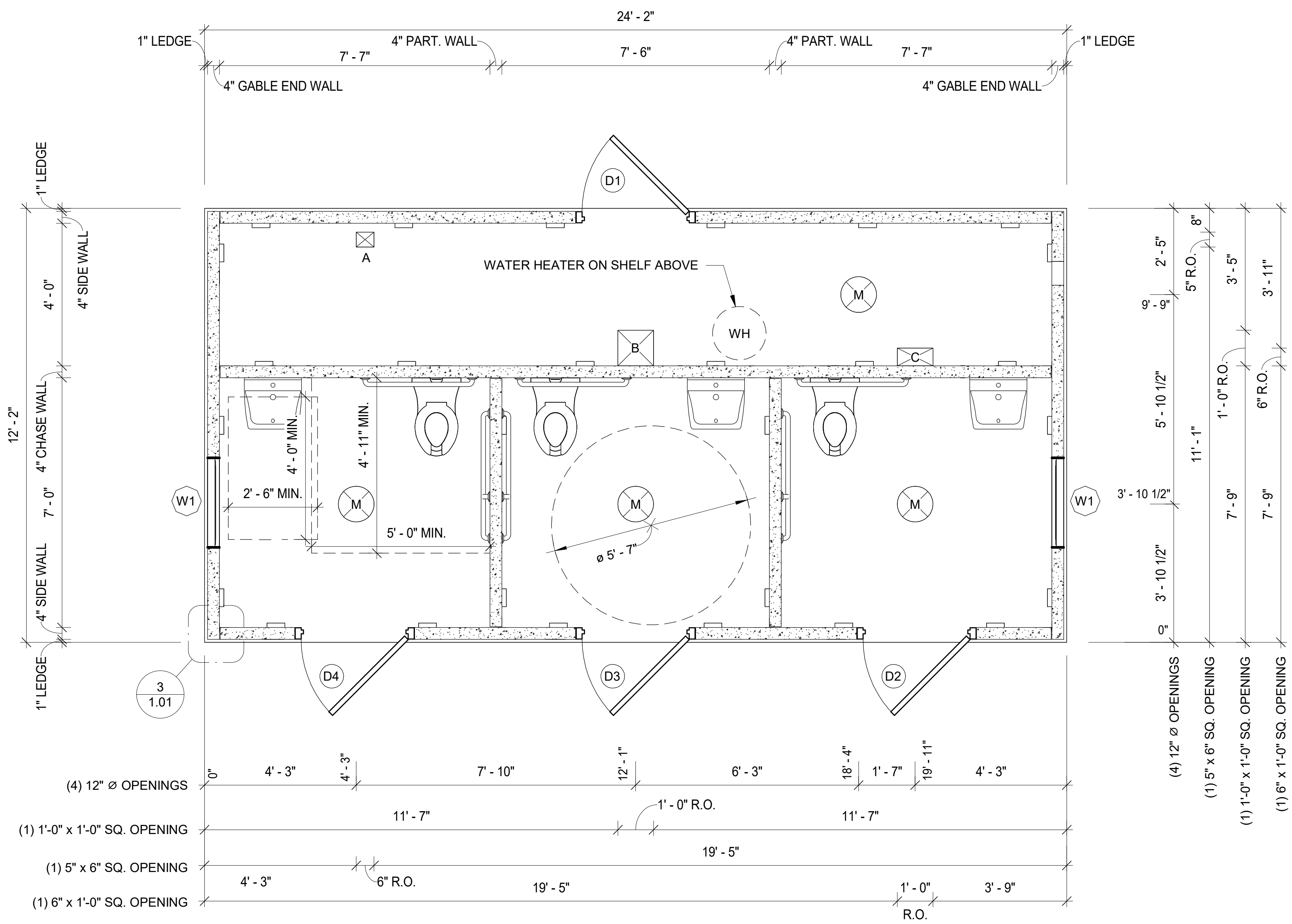


COUGAR RESTROOM

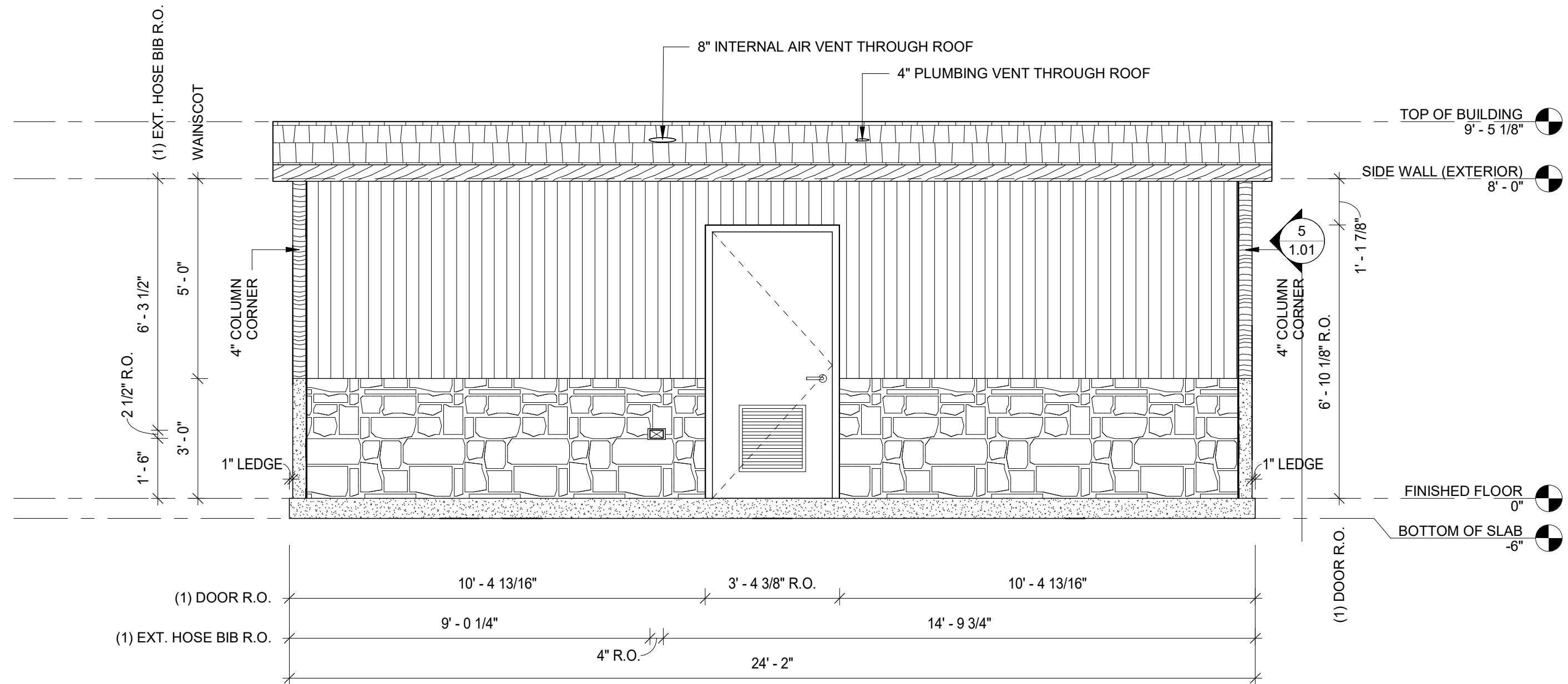
FLOOR PLAN, OPENINGS, & DETAILS

SHEET TITLE:

NO.	DESCRIPTION

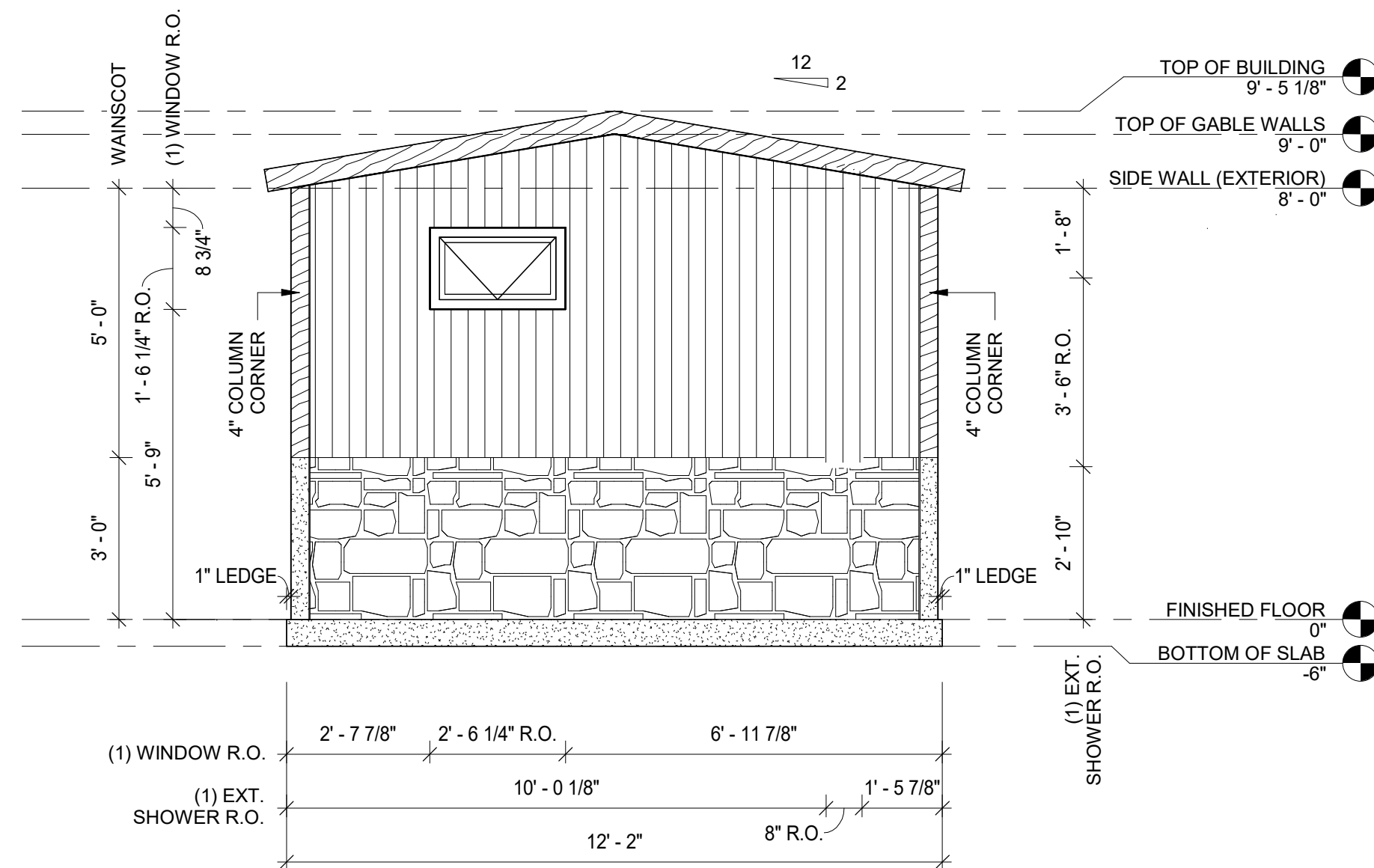


1 FLOOR PLAN & FLOOR OPENINGS  
1.00 3/8" = 1'-0"



**REAR EXTERIOR ELEVATION**

3/8" = 1'-0"



**RIGHT EXTERIOR ELEVATION**

3/8" = 1'-0"

PRECAST PRODUCER:



Huffcut Concrete  
4154 123rd Street  
Chippewa Falls, WI 54729  
PH: (715)723-7446  
www.Huffcut.com

PRECAST ENGINEER:

SIGNATURE AND SEAL

ISSUED FOR / ISSUE DATE

**NOT FOR CONSTRUCTION**

**COUGAR RESTROOM**

EXTERIOR ELEVATIONS

SHEET TITLE:

REVISIONS

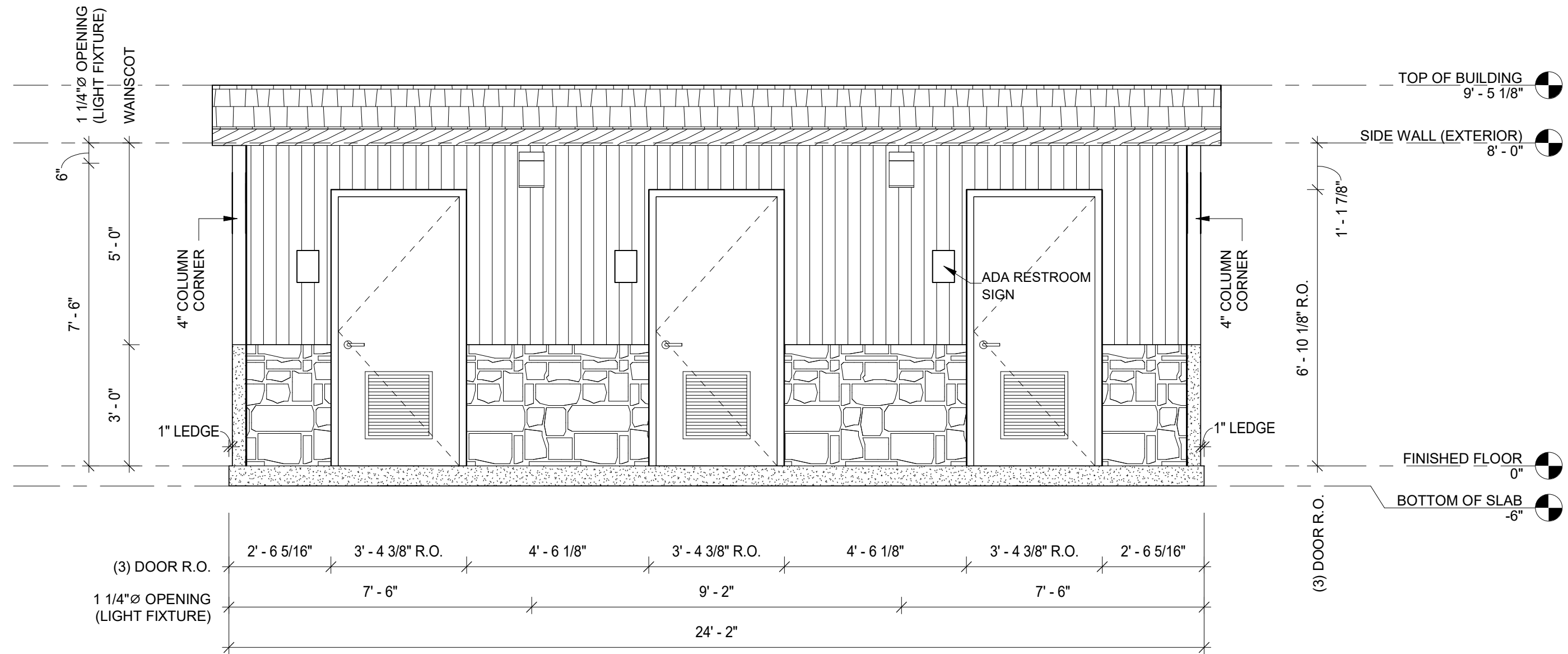
NO.	DESCRIPTION

DRN BY: JS CHK BY: CW

PROJECT NO:  
SHEET DATE:

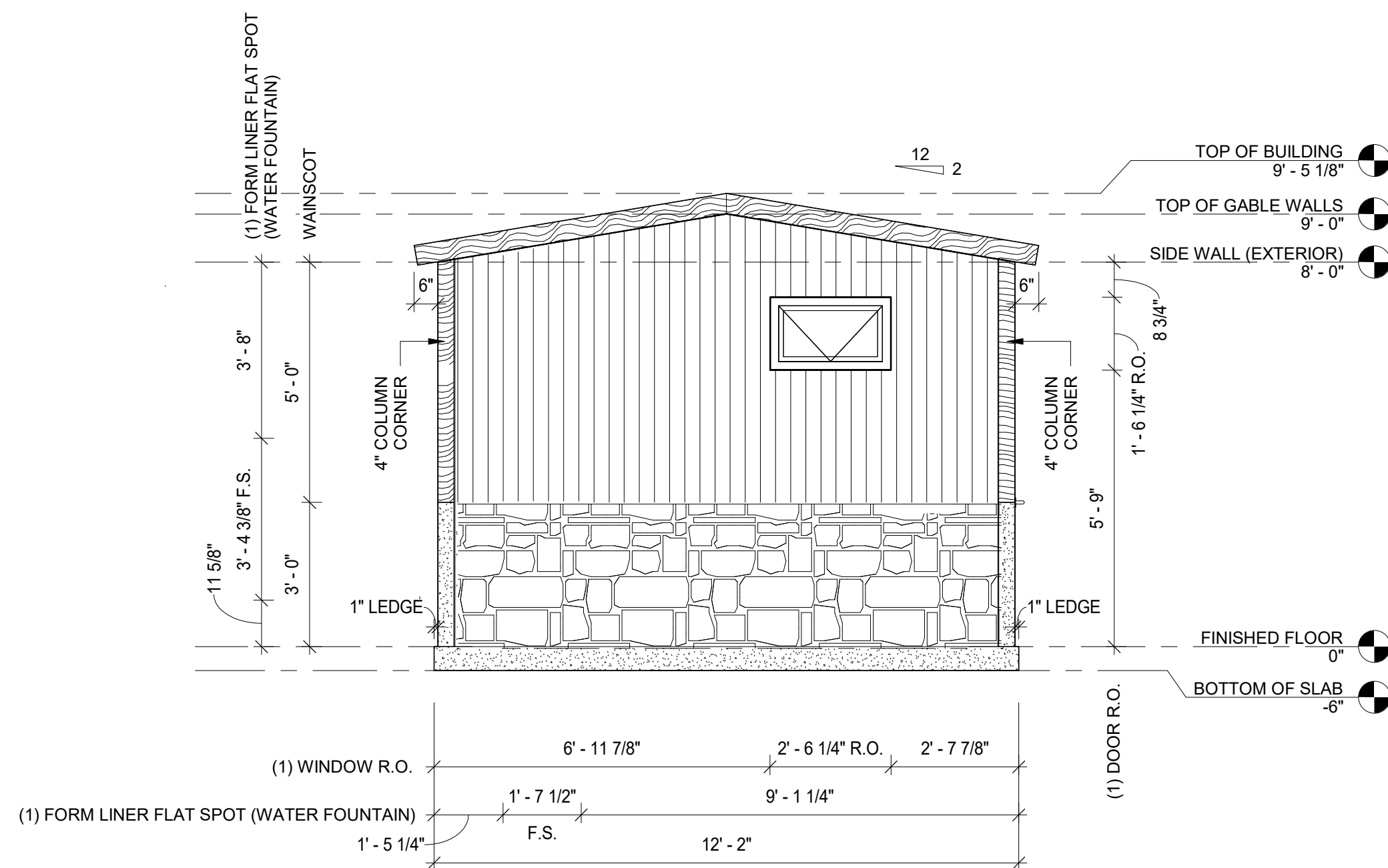
SHEET:

**4.01**



**FRONT EXTERIOR ELEVATION**

3/8" = 1'-0"



**LEFT EXTERIOR ELEVATION**

3/8" = 1'-0"

PRECAST PRODUCER:



Huffcutt Concrete  
4154 123rd Street  
Chippewa Falls, WI 54729  
PH: (715)723-7446  
www.Huffcutt.com

PRECAST ENGINEER:

SIGNATURE AND SEAL

ISSUED FOR / ISSUE DATE

**NOT FOR  
CONSTRUCTION**

**COUGAR RESTROOM**

EXTERIOR ELEVATIONS

SHEET TITLE:

REVISIONS

NO.	DESCRIPTION

DRN BY: JS    CHK BY: CW

PROJECT NO:  
SHEET DATE:

SHEET:

**4.00**

# SPECIFICATIONS

## PART 1 – GENERAL

### 1. SCOPE

1.1. Construction and onsite placement of a prefabricated precast concrete restroom building.

### 2. MANUFACTURER

2.1. Manufacturer shall be Huffcutt Concrete or a pre-approved equal.

2.2. Manufacturer shall be an NPCA Certified Plant or equal with verifiable references demonstrating quality, design and service upon request.

2.3. Manufacturer will provide a written warranty providing 20 years structural, manufacturer's warranty on all hardware and components not produced at precast concrete manufacturer's plant, and 3 years against defects in paint, caulk, and grout.

### 3. DESIGN

3.1. Building will be manufactured using precast concrete including the roof. Building's structural and foundation design will be relevant to the region and properties associated with its final placement. Design will also meet ADA and building code requirements.

### 4. SUBMITTALS

4.1. Manufacturer shall provide submittals and engineering if requested.

## PART 2 – PRODUCTS

### 1. MATERIALS

#### 1.1. Doors and Frames

1.1.1. Doors shall be 18ga galvanized metal, louvered with 16ga frames. Doors and frames shall include one coat of rust inhibitive primer and two finish coats of enamel paint.

#### 1.2. Door Hardware

1.2.1. Aluminum drip cap. Reese or equal.

1.2.2. Door closure with hold open. Falcon or equal.

1.2.3. Stainless hinges with non-removable pin. McKinney equal.

1.2.4. Grade 1 lockset. Function and keying to be verified with owner. 1.2.5. Brush style sweep. Reese or equal.

1.2.6. ADA compliant threshold. Reese or equal.

#### 1.3. Windows

1.3.1. Vinyl frame, obscure glass, operable. Parco or equal.

#### 1.4. Plumbing

##### 1.4.1. Stools

1.4.1.1. Kohler porcelain wall mounted, ADA compliant, elongated bowl.

- 1.4.1.2. Sloan flush valve, concealed, hydraulic actuator.
- 1.4.2. Urinal
  - 1.4.2.1. Kohler porcelain wall mounted, ADA compliant.
  - 1.4.2.2. Sloan flush valve, concealed, hydraulic actuator.
- 1.4.3. Lavatories
  - 1.4.3.1. Kohler wall mounted sink, ADA compliant.
  - 1.4.3.2. Moen single handle ADA metering faucet.
- 1.4.4. Water Heater
  - 1.4.4.1. Bradford white electric water heater. Size to be sufficient for number of showers and lavatories.
- 1.4.5. Mixing Valve
  - 1.4.5.1. Honeywell thermostatic mixing valve, adjustable.
- 1.4.6. Floor Drains
  - 1.4.6.1. Sioux Chief on grade adjustable floor drain.
- 1.4.7. Sediment Filter
  - 1.4.7.1. Rusco sediment filter.
- 1.5. Electrical
  - 1.5.1. Interior
    - 1.5.1.1. RAB Vandalproof Tuff Dome motion sensor.
    - 1.5.1.2. RAB VAN1 LED lights.
    - 1.5.1.3. GFI receptacles.
    - 1.5.1.4. Murdock super secure.
  - 1.5.2. Exterior
    - 1.5.2.1. RAB LED Tallpack lights.
  - 1.5.3. Chase
    - 1.5.3.1. 200 amp loadcenter.
    - 1.5.3.2. (2) 2 bulb LED lamps. (1 per modular section)
    - 1.5.3.3. Soler & Palau exhaust fan.
- 1.6. Interior Hardware
  - 1.6.1. Stainless 3 roll toilet paper dispenser.
  - 1.6.2. ADA toilet stalls shall have (1) 18" stainless vertical grab bar, (1) 36" stainless horizontal grab bar, (1) 42" stainless horizontal grab bar.
  - 1.6.3. Stainless frame 18" x 36" mirror.
  - 1.6.4. (2) coat hooks
- 1.7. Sealers
  - 1.7.1. Floor shall be sealed using a deep penetrating, high alkali resistant, low volatility product. TK-290 or equal.
- 1.8. Caulks and Grout
  - 1.8.1. All joints between precast panels shall be caulked using a durable, flexible polyurethane sealant. BASF Sonolastic NP-1 or equal.

- 1.8.2. Weld plate panel connections shall be grouted flush with interior wall surface.  
Speed Crete Red Line or equal.

## 2. FINISHES

### 2.1. Interior

- 2.1.1. Smooth trowel finish.

### 2.2. Exterior

- 2.2.1. Exterior wall appearance to be approved by owner using an architectural form liner.
- 2.2.2. Roof shall be cedar shake architectural form liner.

### 2.3. Paint

#### 2.3.1. Interior

- 2.3.1.1. Wall panels shall be primed with a premium quality water based acrylic bonding primer moisture and alkali resistant. Finish coat shall be a high performance acrylic enamel.

#### 2.3.2. Exterior

- 2.3.2.1. Roof shall be covered with a quality 100% acrylic satin paint. Owner to determine color.
- 2.3.2.2. Walls shall be covered with a quality concrete stain. Owner to determine color.
- 2.3.2.3. Doors shall be covered using 2 coats of a high performance 100% acrylic satin enamel. Owner to determine color.

## **Part 3 – Execution**

### 1. PRECAST CONCRETE FAMILY STYLE RESTROOM – SHOWER BUILDING

- 1.1. Building manufacturer shall construct, assemble, paint, install plumbing and electrical at their plant so that it may be transported to the jobsite in finished modules and placed using a crane.
- 1.2. Building manufacturer shall provide mechanical rough in drawing showing where electrical, water supply line, waste line, and floor drains are to be located for hook up to building.
- 1.3. Contractor will make final mechanical connections after the building is placed by manufacturer.
- 1.4. Manufacturer will caulk interior and exterior seams between modules. Manufacturer will also perform any shipping and handling repairs during installation.

### 2. ONSITE

- 2.1. Contractor shall provide adequate access and a level pad for the crane and semis to sit side by side under their own power. Working radius shall be 35' from center pin on crane.
- 2.2. Contractor shall design and pour a foundation suitable for building to sit on. Foundation shall be level to within ¼".

- 2.3. Contractor shall rough in mechanicals according to mechanical rough in drawing provided by building manufacturer. Mechanicals shall be terminated at top of foundation. Final mechanical connections shall be done by contractor including floor drains.
- 2.4. Contractor will perform initial startup of building using O & M manual as a reference. Contractor will also perform any troubleshooting during initial startup.

