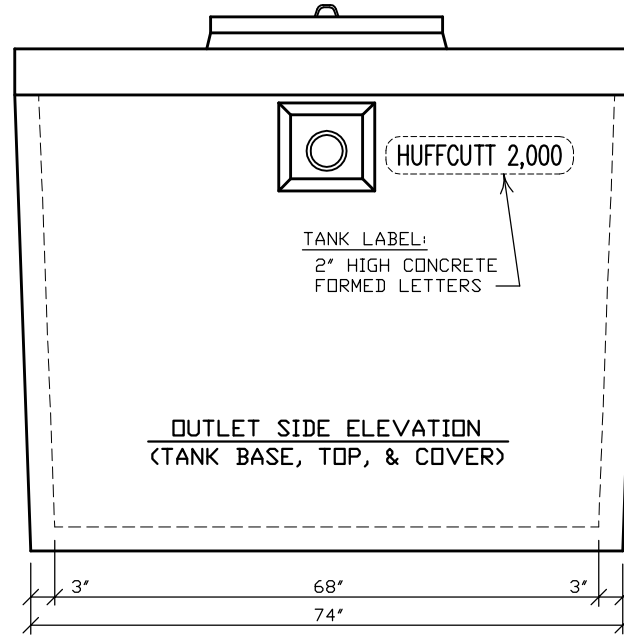


FLOOR PLAN
(TANK BASE)

NOTE: ADDITIONAL BAFFLE FOR GREASE INTERCEPTOR.



OUTLET SIDE ELEVATION
(TANK BASE, TOP, & COVER)

N.P.C.A. CERTIFIED PLANT
&
MEMBER OF:
NATIONAL & WISCONSIN PRECAST CONCRETE ASSOCIATIONS

THIS DRAWING SHALL NOT
BE COPIED OR SUBMITTED
TO OTHERS WITHOUT THE
CONSENT OF THIS COMPANY.

4154 123RD STREET
CHIPPEWA FALLS, WI 54729
(715) 723-7446 * (800) 924-1516
FAX (715) 723-7111 * www.huffcutt.com

HUFFCUTT
CONCRETE, INC

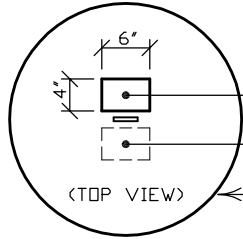


PROJECT:
2,000 GAL. LOW PROFILE
SEPTIC OR
GREASE INTERCEPTOR

WARNING LABEL EMBEDDED INTO
CONCRETE COVER READS AS FOLLOWS:

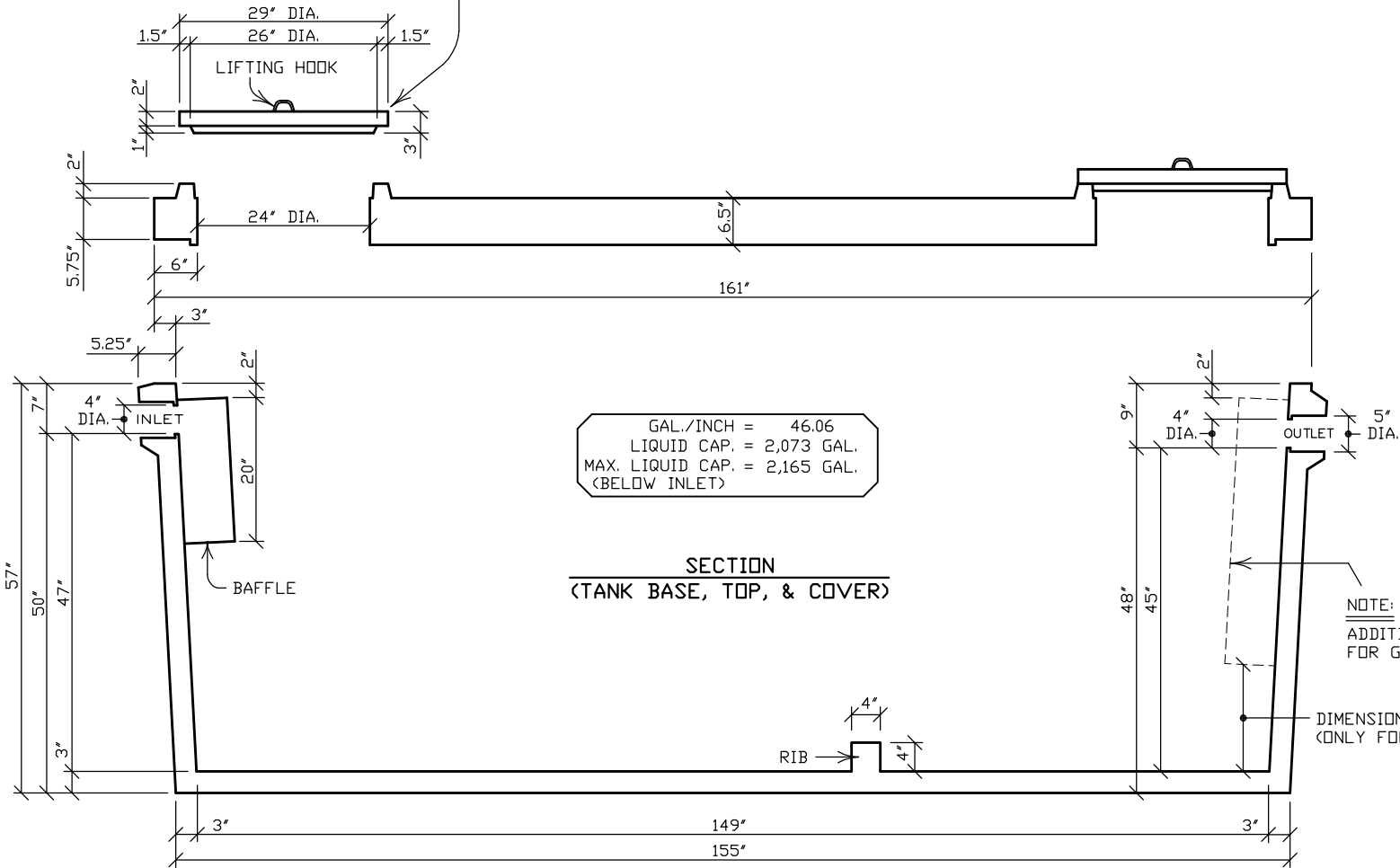
CAUTION:
DO NOT ENTER WITHOUT PROPER VENTILATION.
COULD CAUSE DEATH...DANGEROUS GAS.

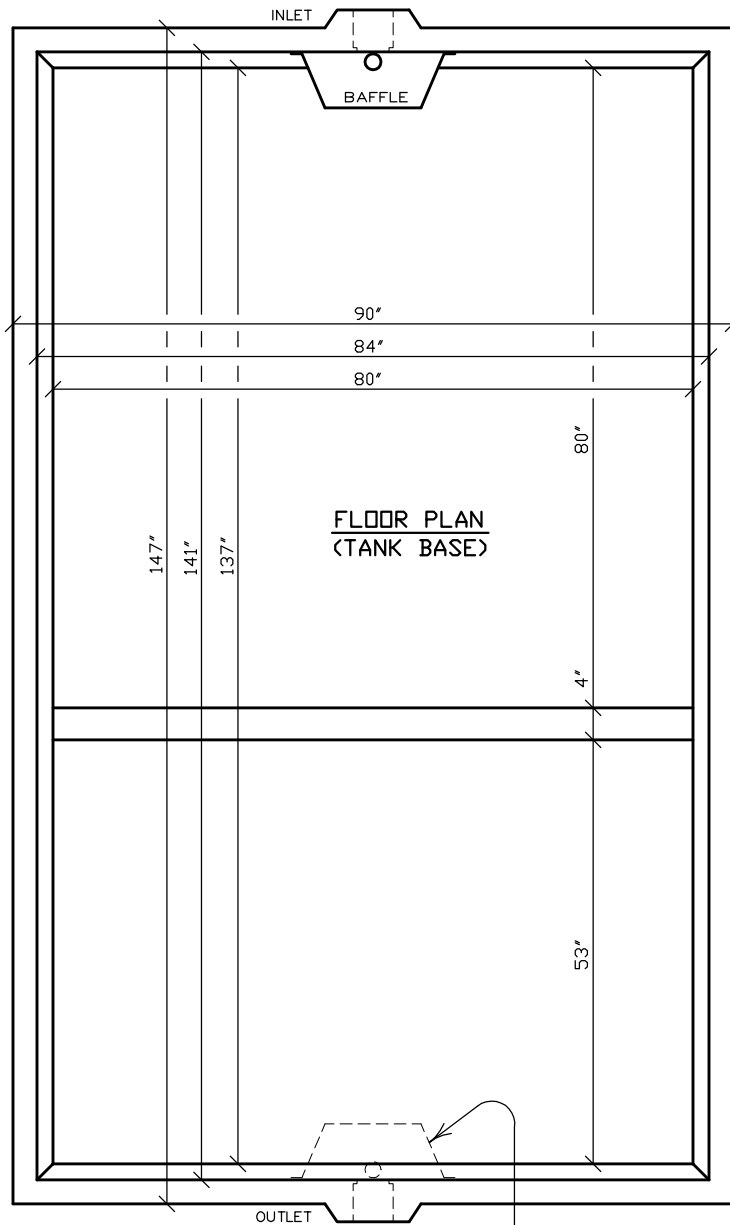
NOTE: ADDITIONAL LABEL FOR GREASE INTERCEPTOR.
INFORMATIONAL LABEL READS AS FOLLOWS:
GREASE INTERCEPTOR



29" DIAMETER CONCRETE COVER (TYPICAL)

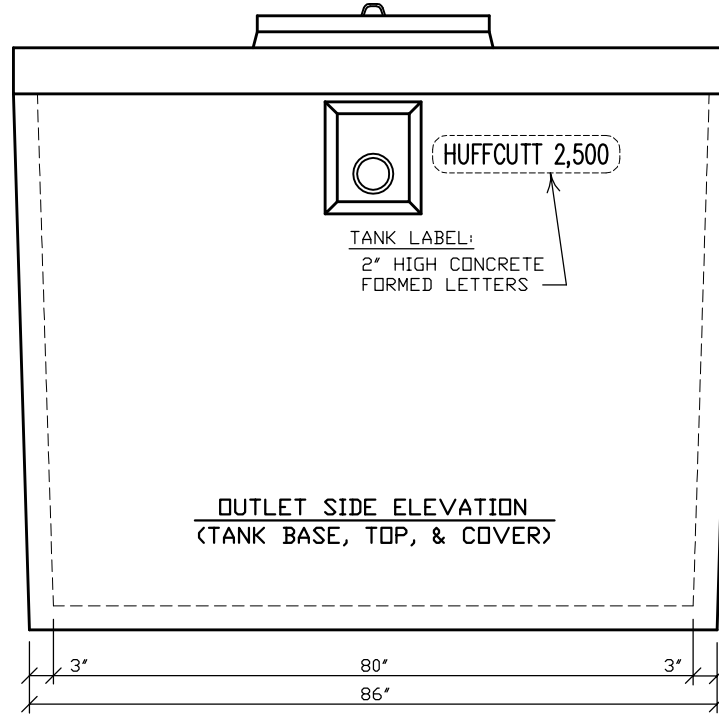
SEE "ACCESSORIES" FOR OTHER COVER OPTIONS





FLOOR PLAN
(TANK BASE)

NOTE: ADDITIONAL BAFFLE FOR GREASE INTERCEPTOR.



OUTLET SIDE ELEVATION
(TANK BASE, TOP, & COVER)

N.P.C.A. CERTIFIED PLANT
&
MEMBER OF:
NATIONAL & WISCONSIN PRECAST CONCRETE ASSOCIATIONS

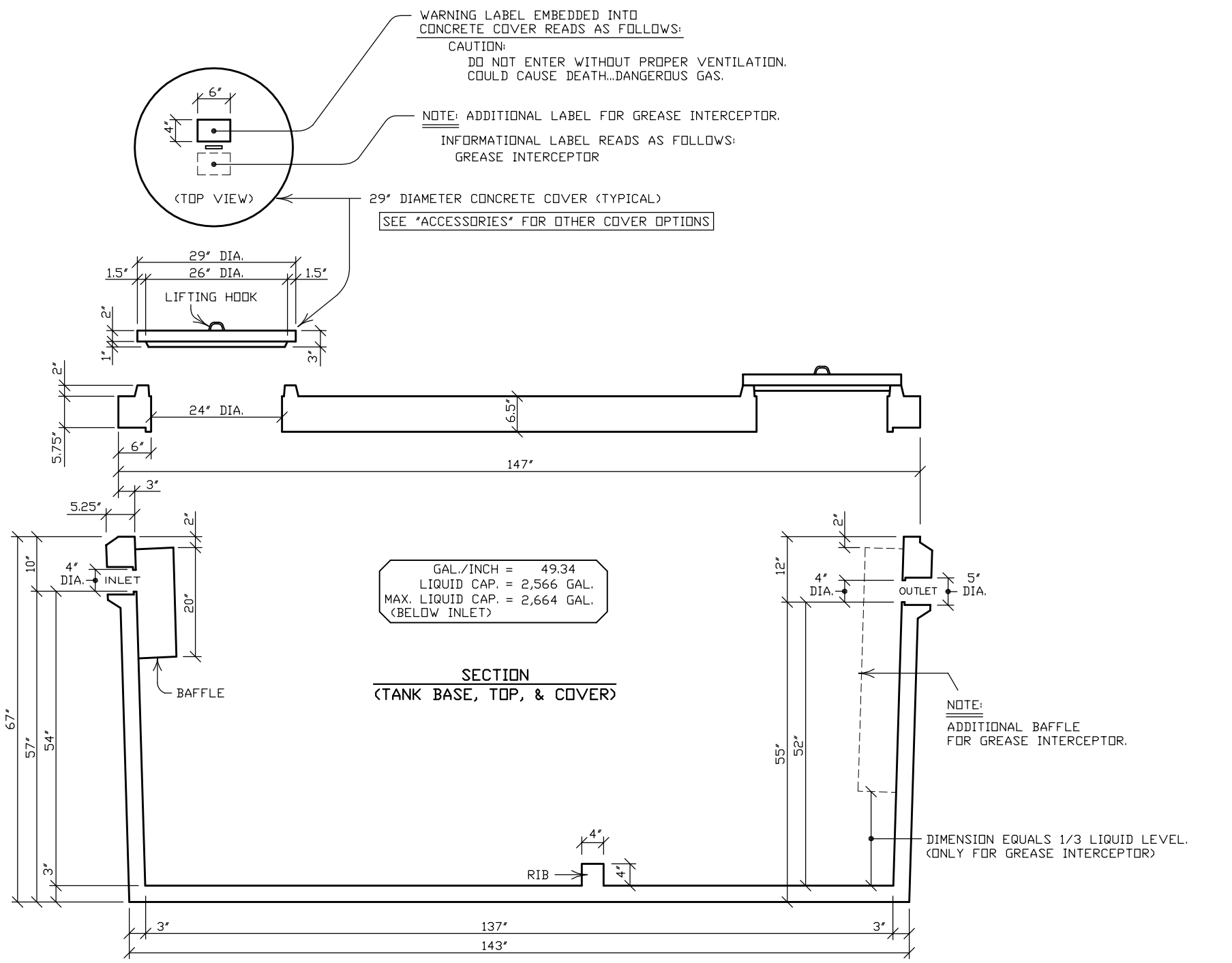
THIS DRAWING SHALL NOT
BE COPIED OR SUBMITTED
TO OTHERS WITHOUT THE
CONSENT OF THIS COMPANY.

4154 123rd STREET
CHIPPEWA FALLS, WI 54729
(715) 723-7446 * (800) 924-1516
FAX (715) 723-7111 * www.huffcutt.com

HUFFCUTT
CONCRETE, INC



PROJECT:
2,500 GAL. LOW PROFILE
SEPTIC OR
GREASE INTERCEPTOR



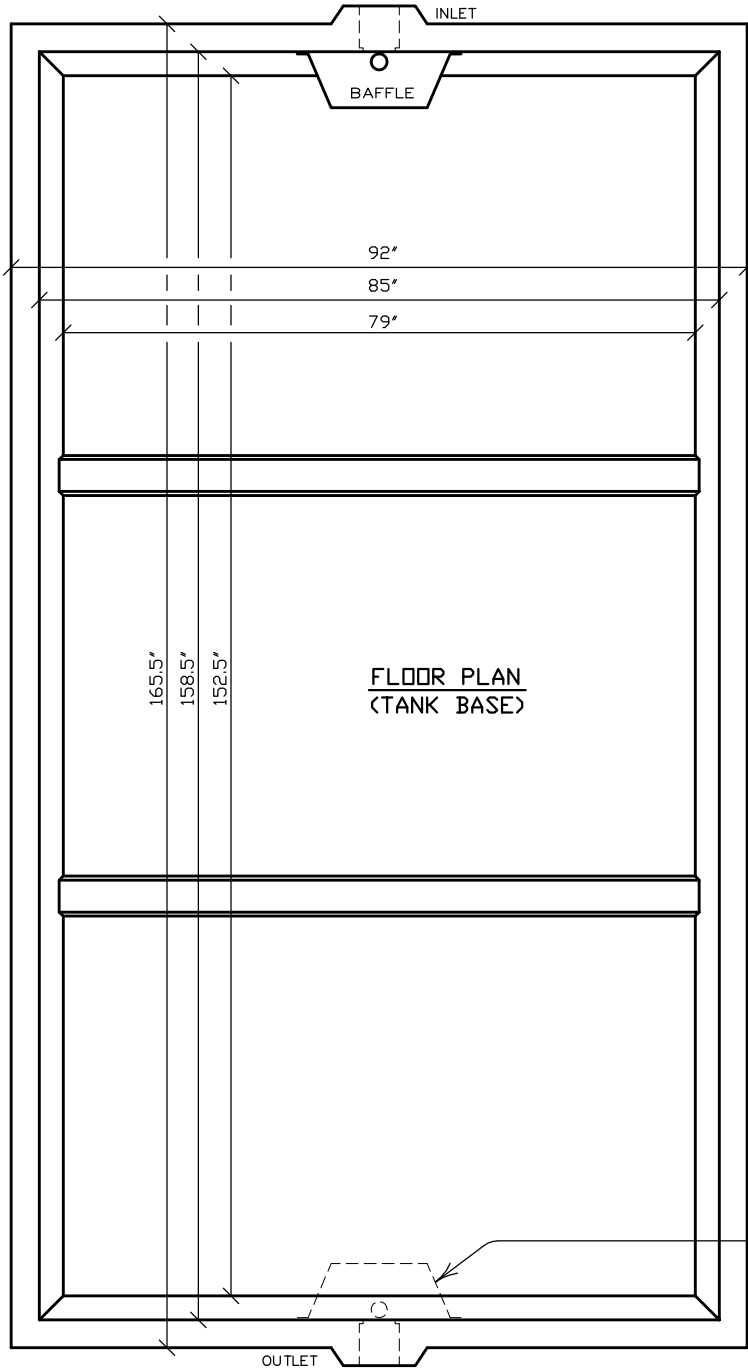
N.P.C.A. CERTIFIED PLANT
&
MEMBER OF:
NATIONAL & WISCONSIN PRECAST CONCRETE ASSOCIATIONS

THIS DRAWING SHALL NOT BE COPIED OR SUBMITTED TO OTHERS WITHOUT THE CONSENT OF THIS COMPANY.

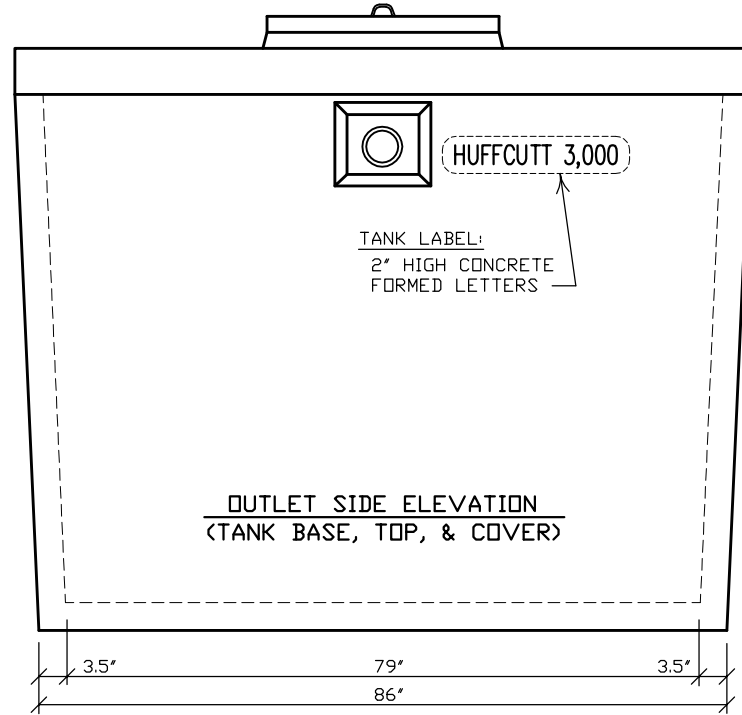
4154 123RD STREET
CHIPPEWA FALLS, WI 54729
(715) 723-7446 * (800) 924-1516
FAX (715) 723-7111 * www.huffcutt.com



PROJECT:
2,500 GAL. LOW PROFILE
SEPTIC DR
GREASE INTERCEPTOR



FLOOR PLAN
(TANK BASE)



OUTLET SIDE ELEVATION
(TANK BASE, TOP, & COVER)

NOTE: ADDITIONAL BAFFLE FOR GREASE INTERCEPTOR.

N.P.C.A. CERTIFIED PLANT
&
MEMBER OF:
NATIONAL & WISCONSIN PRECAST CONCRETE ASSOCIATIONS

THIS DRAWING SHALL NOT
BE COPIED OR SUBMITTED
TO OTHERS WITHOUT THE
CONSENT OF THIS COMPANY.

4154 123rd STREET
CHIPPEWA FALLS, WI 54729
(715) 723-7446 * (800) 924-1516
FAX (715) 723-7111 * www.huffcutt.com

HUFFCUTT
CONCRETE, INC

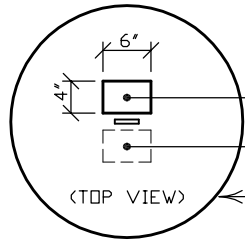


PROJECT:
3,000 H.D. LOW PROFILE
SEPTIC DR
GREASE INTERCEPTOR

WARNING LABEL EMBEDDED INTO
CONCRETE COVER READS AS FOLLOWS:

CAUTION:
DO NOT ENTER WITHOUT PROPER VENTILATION.
COULD CAUSE DEATH...DANGEROUS GAS.

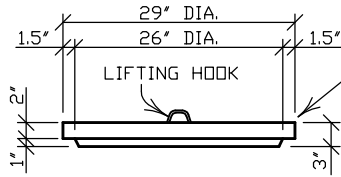
NOTE: ADDITIONAL LABEL FOR GREASE INTERCEPTOR.
INFORMATIONAL LABEL READS AS FOLLOWS:
GREASE INTERCEPTOR



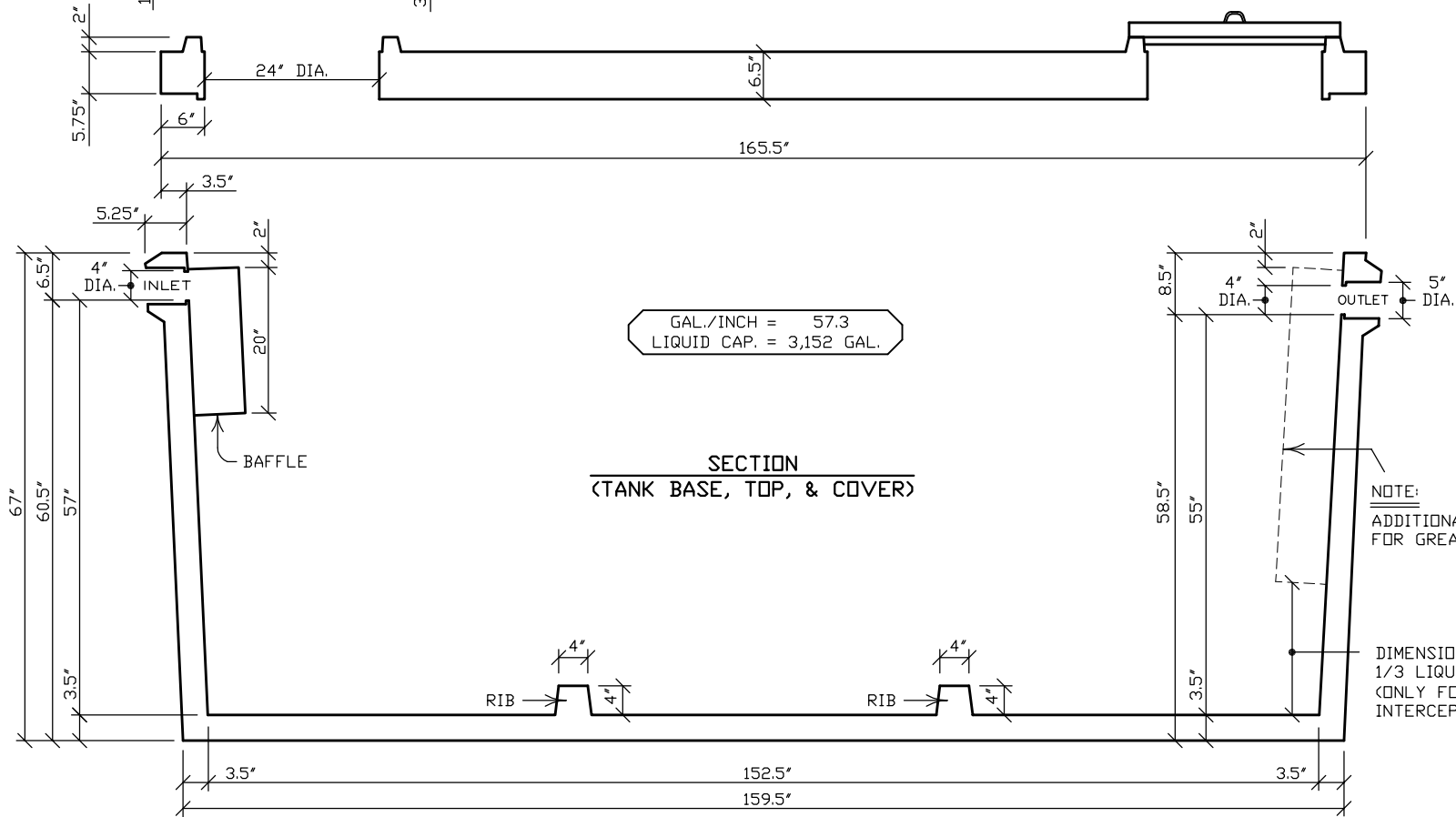
(TOP VIEW)

29" DIAMETER CONCRETE COVER (TYPICAL)

SEE "ACCESSORIES" FOR OTHER COVER OPTIONS



29" DIA.
26" DIA.
LIFTING HOOK



GAL./INCH = 57.3
LIQUID CAP. = 3,152 GAL.

SECTION
(TANK BASE, TOP, & COVER)

NOTE:
ADDITIONAL BAFFLE
FOR GREASE INTERCEPTOR.

DIMENSION EQUALS
1/3 LIQUID LEVEL.
(ONLY FOR GREASE
INTERCEPTOR)

N.P.C.A. CERTIFIED PLANT
&
MEMBER OF:
NATIONAL & WISCONSIN PRECAST CONCRETE ASSOCIATIONS

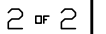
THIS DRAWING SHALL NOT
BE COPIED OR SUBMITTED
TO OTHERS WITHOUT THE
CONSENT OF THIS COMPANY.

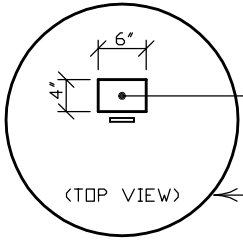
4154 123rd STREET
CHIPPEWA FALLS, WI 54729
(715) 723-7446 * (800) 924-1516
FAX (715) 723-7111 * www.huffcutt.com

HUFFCUTT
CONCRETE, INC



PROJECT:
3,000 H.D. LOW PROFILE
SEPTIC OR
GREASE INTERCEPTOR



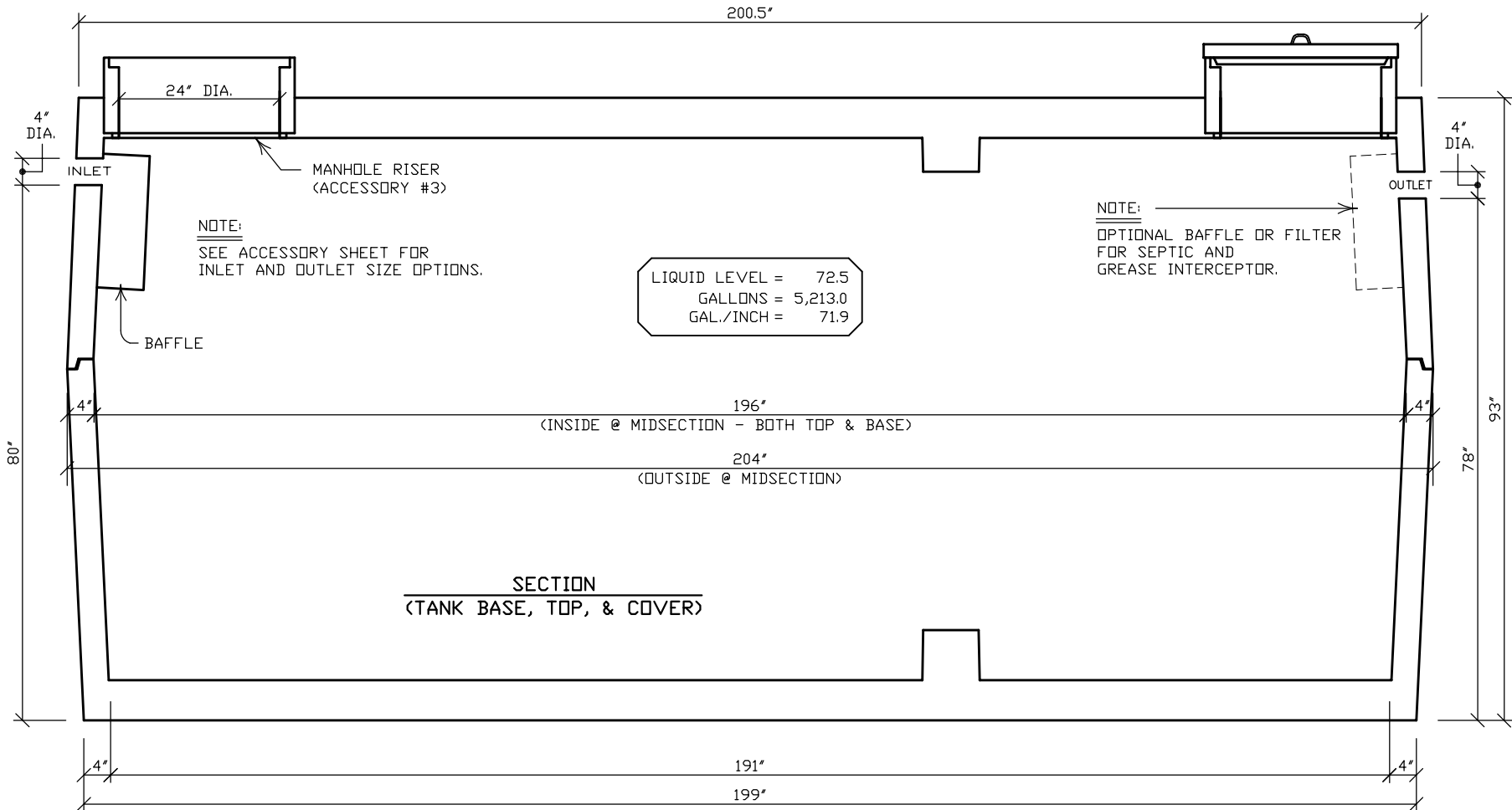
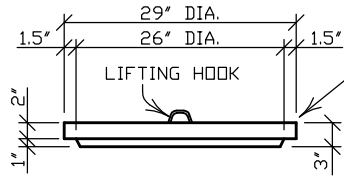


WARNING LABEL EMBEDDED INTO
CONCRETE COVER READS AS FOLLOWS:

CAUTION:
DO NOT ENTER WITHOUT PROPER VENTILATION.
COULD CAUSE DEATH...DANGEROUS GAS.

29" DIAMETER CONCRETE COVER (TYPICAL)

SEE "ACCESSORIES" FOR OTHER COVER OPTIONS



NOTE:
SEE ACCESSORY SHEET FOR
INLET AND OUTLET SIZE OPTIONS.

LIQUID LEVEL = 72.5
GALLONS = 5,213.0
GAL./INCH = 71.9

NOTE:
OPTIONAL BAFFLE OR FILTER
FOR SEPTIC AND
GREASE INTERCEPTOR.

SECTION
(TANK BASE, TOP, & COVER)

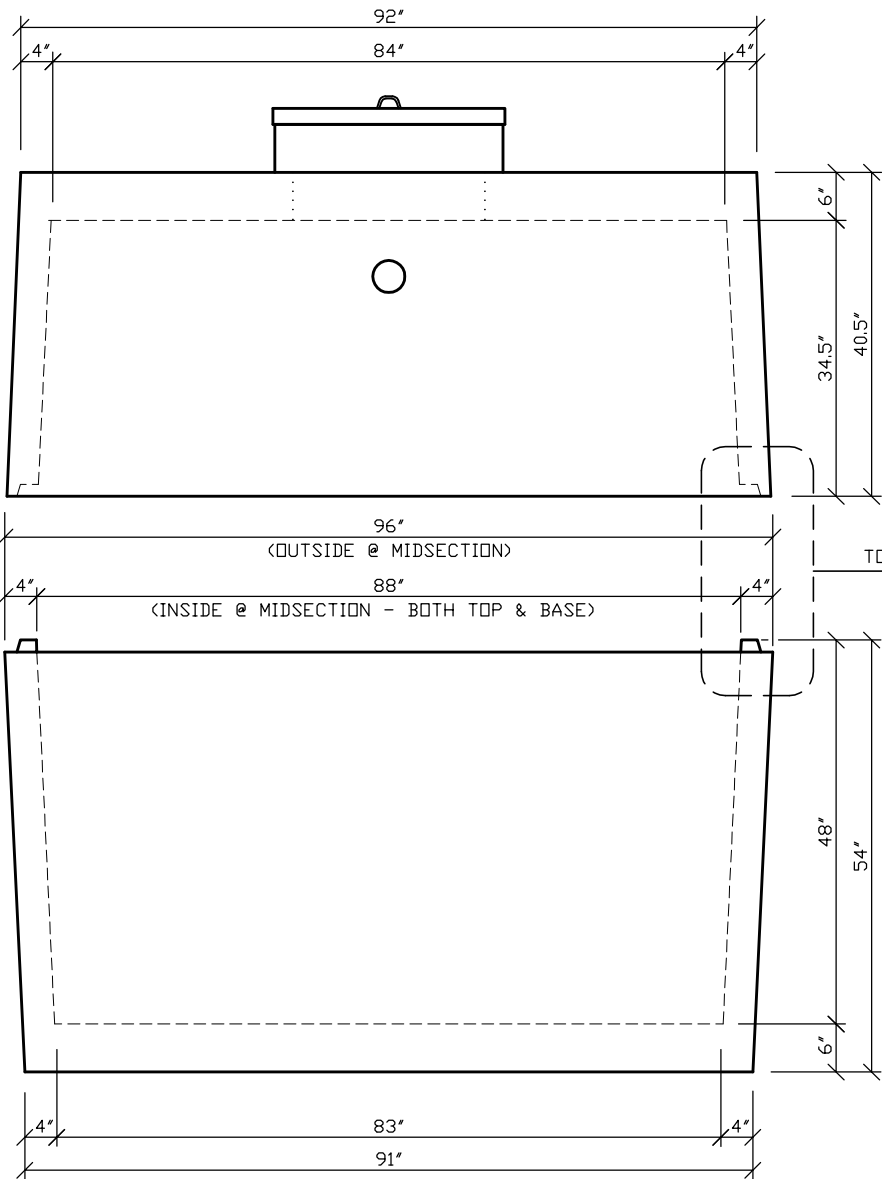
N.P.C.A. CERTIFIED PLANT
&
MEMBER OF:
NATIONAL & WISCONSIN PRECAST CONCRETE ASSOCIATIONS

THIS DRAWING SHALL NOT
BE COPIED OR SUBMITTED
TO OTHERS WITHOUT THE
CONSENT OF THIS COMPANY

4154 123RD STREET
CHIPPEWA FALLS, WI 54729
(715) 723-7446 * (800) 924-1516
FAX (715) 723-7111 * www.huffcutt.com



PROJECT:
5,000 GAL. SEPTIC, PUMP,
HOLDING, SIPHON, &
GREASE INTERCEPTOR



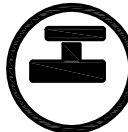
OUTLET SIDE ELEVATION
(TANK BASE, TOP, & COVER)

N.P.C.A. CERTIFIED PLANT
&
MEMBER OF:
NATIONAL & WISCONSIN PRECAST CONCRETE ASSOCIATIONS

THIS DRAWING SHALL NOT
BE COPIED OR SUBMITTED
TO OTHERS WITHOUT THE
CONSENT OF THIS COMPANY.

4154 123RD STREET
CHIPPEWA FALLS, WI 54729
(715) 723-7446 * (800) 924-1516
FAX (715) 723-7111 * www.huffcutt.com

HUFFCUTT
CONCRETE, INC



PROJECT:
5,000 GAL. SEPTIC, PUMP,
HOLDING, SIPHON, &
GREASE INTERCEPTOR