



1 LARGE TRANSFORMER PAD
 SCALE: $\frac{1}{2}$ " = 1'-0"

E.H.A.  = ERECTION HEAD ANCHOR
 = DR ANHCOR (FLOATED IN)

SLAB CUBIC YARD = 1.56
 SLAB WEIGHT = 6,240 LBS



PRELIMINARY DRAWINGS	06/25/19
UPDATED DRAWINGS	
UPDATED DRAWINGS	
UPDATED DRAWINGS	
UPDATED DRAWINGS	

THIS DRAWING SHALL NOT BE COPIED OR SUBMITTED TO OTHERS WITHOUT THE CONSENT OF THIS COMPANY.

4154 123rd STREET
 CHIPPEWA FALLS, WI 54729
 (715) 723-7446 * (800) 924-1516
 FAX (715) 723-7111 * www.huffcutt.com

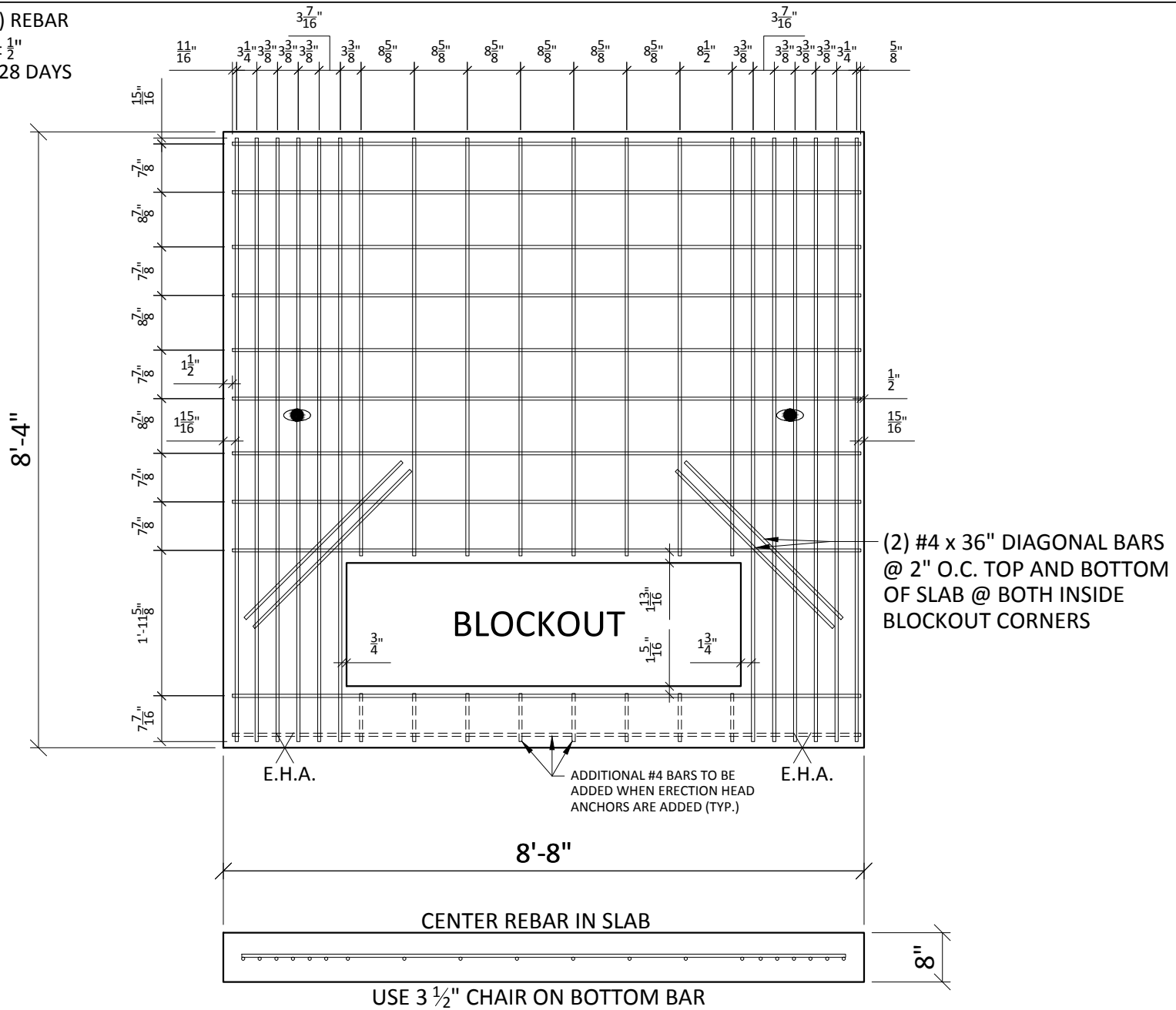
HUFFCUTT
 CONCRETE, INC.
 N.P.C.A. CERTIFIED PLANT

PROJECT:
LARGE TRANSFORMER PAD

USE GRADE 60 (A615) REBAR

H = ± 1" V = ± 1/2"

CONC. = 5,000 PSI @ 28 DAYS



1 LARGE TRANSFORMER PAD
SCALE: 1/2" = 1'-0"

E.H.A. X = ERECTION HEAD ANCHOR

● = DR ANCHOR (FLOATED IN)

(2) #4 x 36" DIAGONAL BARS @ 2" O.C. TOP AND BOTTOM OF SLAB @ BOTH INSIDE BLOCKOUT CORNERS



PRELIMINARY DRAWINGS	06/25/19
UPDATED DRAWINGS	
UPDATED DRAWINGS	
UPDATED DRAWINGS	
UPDATED DRAWINGS	

THIS DRAWING SHALL NOT BE COPIED OR SUBMITTED TO OTHERS WITHOUT THE CONSENT OF THIS COMPANY.

4154 123rd STREET
CHIPPEWA FALLS, WI 54729
(715) 723-7446 * (800) 924-1516
FAX (715) 723-7111 * www.huffcutt.com

HUFFCUTT
CONCRETE, INC.
N.P.C.A. CERTIFIED PLANT

PROJECT:
LARGE TRANSFORMER PAD