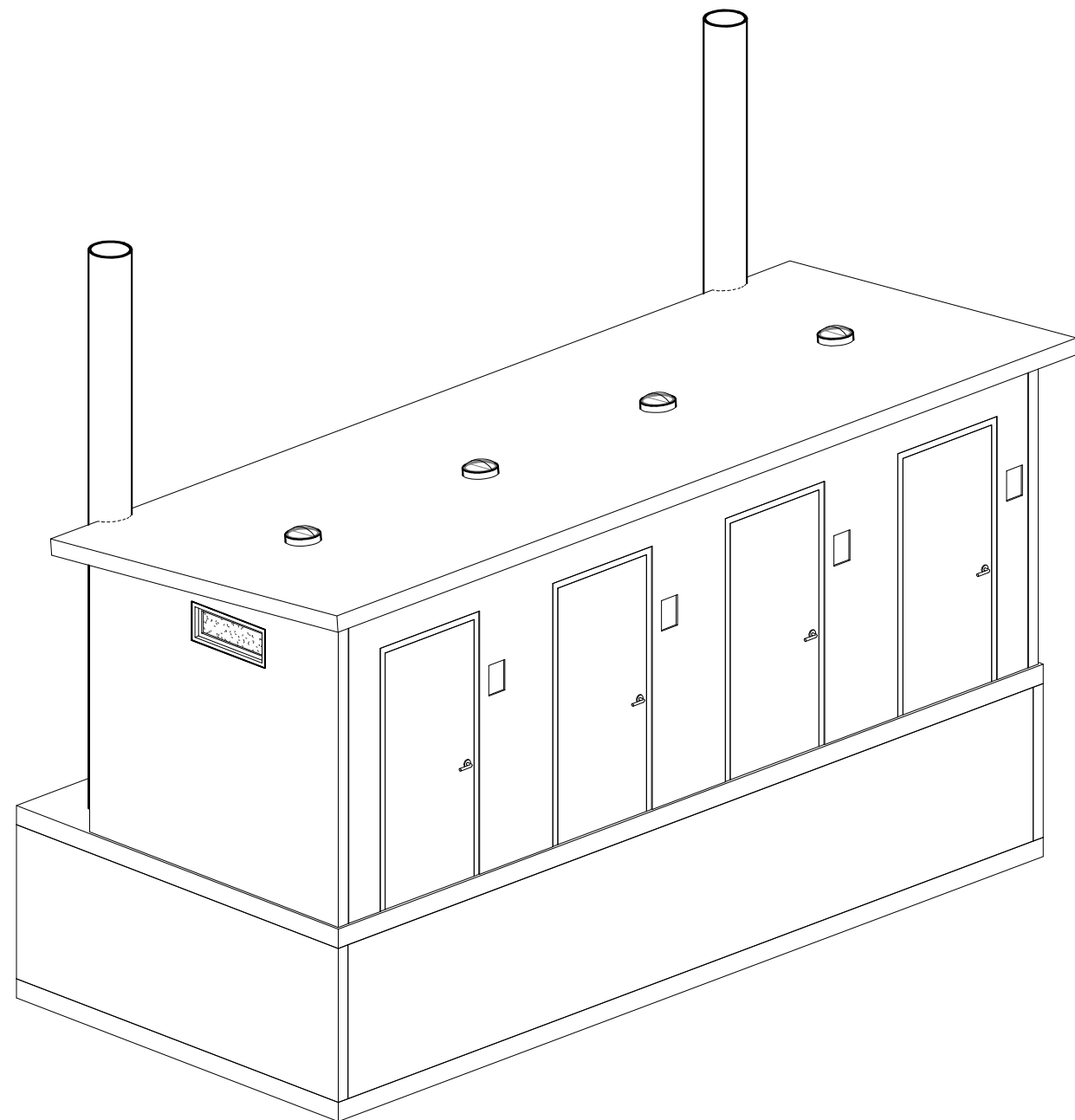
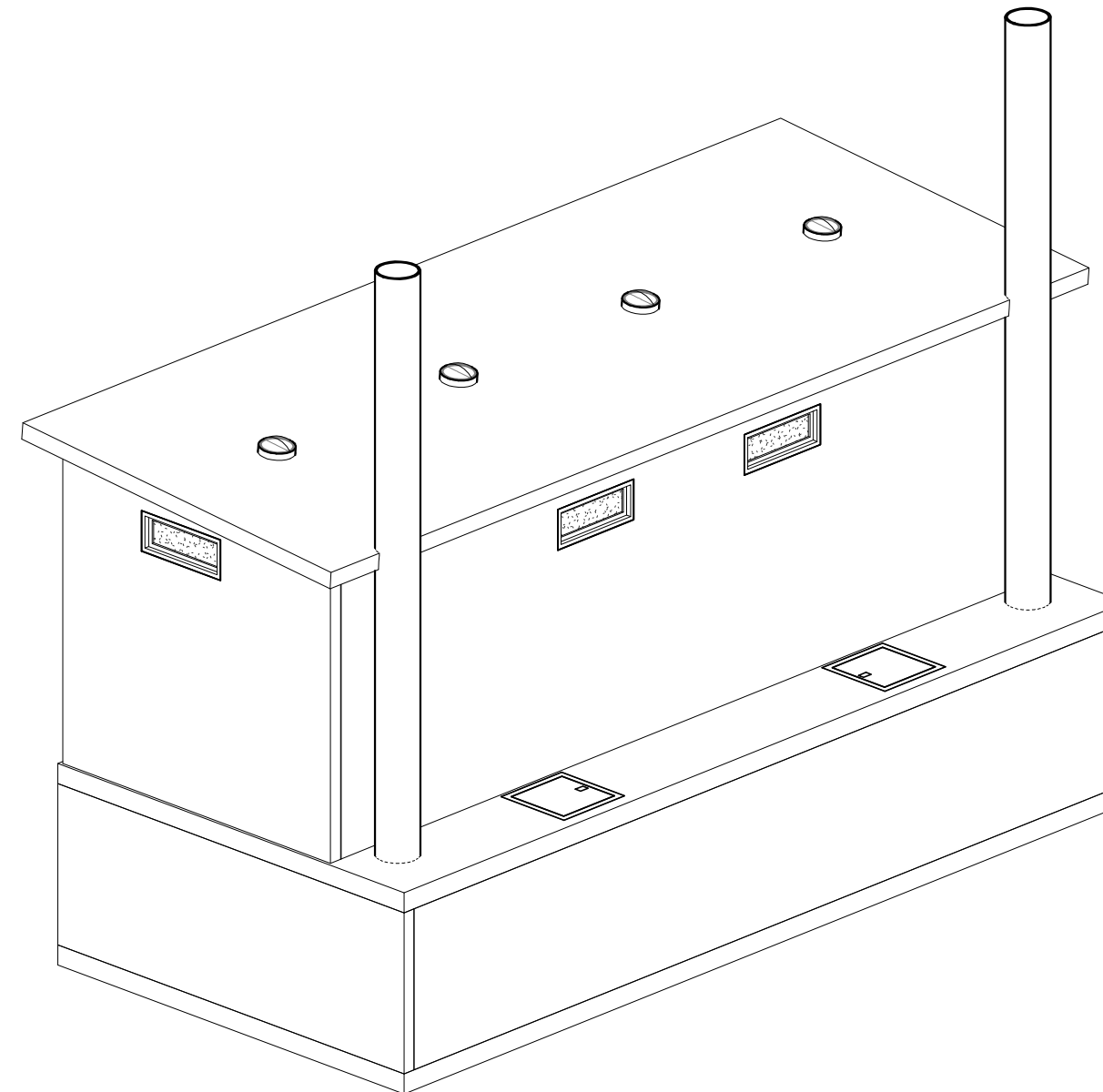


# CANVASBACK VAULT TOILET

SHEET INDEX				
Sheet #	Sheet Name	Revision	Description	Rev. Date
0.00	COVERSHEET			
1.00	FLOOR PLAN, OPENINGS, & DETAILS			
1.01	DETAILS			
2.00	PANEL LAYOUT & ROOF SECTION			
4.00	EXTERIOR ELEVATIONS			



FRONT LEFT ISOMETRIC VIEW



RIGHT REAR ISOMETRIC VIEW

PROJECT CONTACTS:

HUFFCUTT CONCRETE PROJECT MANAGER

PROJECT GENERAL CONTRACTOR

JOBSITE ACCESS NOTES

SELLERS TRUCKS REQUIRE 50'-0" ALL WEATHER ACCESS AROUND EXTERIOR/INTERIOR OF THE BUILDING.

ACCESS AREAS SHALL BE ADEQUATE FOR UNRESTRICTED OPERATION OF SELLERS TRUCKS.

ACCESS/HAUL ROADS BY OTHERS (NOT BY HUFFCUTT CONCRETE). SELLERS TRUCKS TO OPERATE UNDER THEIR OWN POWER.

OBSTRUCTIONS, INCLUDING POWER LINES, WIRES & OBJECTS WHICH ARE HAZARDOUS TO SELLERS TRUCKS & PERSONNEL SHALL BE REMOVED BY BUYER.

DAMAGE TO EXISTING LANDSCAPING, DRIVES, SIDEWALKS, CURBS, FOUNDATIONS, SLABS, UNDERGROUND UTILITIES AND OTHER INSTALLATIONS TO FACILITATE INSTALLATION WILL NOT BE THE RESPONSIBILITY OF HUFFCUTT CONCRETE.

ABBREVIATIONS

@	-	AT	CDR	-	COTTON DUCK REINFORCED	GALV	-	HOT DIP GALVANIZE	OPNG	-	OPENING	TBRE	-	TOP OF BEAM RISER ELEV.	TRE	-	TOP OF RISER ELEV.
∅	-	DIAMETER	CONC	-	CONCRETE	GC	-	GENERAL CONTRACTOR	OPP	-	OPPOSITE	TCE	-	TOP OF COLUMN ELEV.	TTE	-	TOP OF DBL TEE ELEV. (AT GRID)
A.B.	-	ANCHOR BOLT	CONN	-	CONNECTION	INS	-	INSERT	PBE	-	PLANK BEARING ELEV.	TCWE	-	TOP OF CIP WALL ELEV.	TSE	-	TOP OF SPANDREL ELEV.
ARCH	-	ARCHITECTURAL	CONT	-	CONTINUOUS	INSUL	-	INSULATION	PROJ	-	PROJECTION	TCWP	-	TOP OF COLUMN W.P. (AT GRID)	TWE	-	TOP OF WALL ELEV.
BBE	-	BRICK BEARING ELEV.	DBE	-	DECK BEARING ELEV.	INT	-	INTERIOR	ROF	-	RANDOM ORIENTATED FIBER	TECE	-	TOP OF EXISTING COLUMN ELEV.	TYP	-	TYPICAL
BCE	-	BOT. OF COLUMN ELEV.	DIA	-	DIAMETER	JBE	-	JOIST BEARING ELEV.	REQD	-	REQUIRED	TETE	-	TOP OF EXISTING DBL TEE ELEV.	UNO	-	UNLESS NOTED OTHERWISE
BM	-	BEAM	DTBE	-	DOUBLE TEE BEARING ELEV.	JST	-	JOIST	RVL	-	REVEAL	TFE	-	TOP OF FOOTING ELEV.	W	-	WITH
BOS	-	BOT. OF STEEL	EA	-	EACH	JT	-	JOINT	SGE	-	SLAB ON GRADE ELEV.	TFWE	-	TOP OF FOUNDATION WALL ELEV.	WHE	-	WEST HAUNCH ELEVATION
(B)	-	BOTTOM	EHE	-	EAST HAUNCH ELEVATION	LLH	-	LONG LEG HORIZONTAL	SHE	-	SOUTH HAUNCH ELEVATION	TGBE	-	TOP OF GRADE BEAM ELEV.	WP	-	WORKING POINT
BOT	-	BOTTOM	ELEV	-	ELEVATION	LLV	-	LONG LEG VERTICAL	SIL	-	SUPERIMPOSED LOAD	THE	-	TOP OF HAUNCH ELEV.	WSE	-	WEST STEP ELEVATION
BPE	-	BOT. OF POCKET ELEV.	EP	-	ELECTRO- PLATED	MAX	-	MAXIMUM	SIM	-	SIMILAR	THWP	-	TOP OF HAUNCH W.P. (AT GRID)	WWF	-	WELDED WIRE FABRIC
BRG	-	BEARING	ESE	-	EAST STEP ELEVATION	MIN	-	MINIMUM	SPA	-	SPACES	TLE	-	TOP OF LEDGE ELEV.	ZRC	-	PAINTED W/ ZINC RICH COMPOUND
BSE	-	BOT. OF SPANDREL ELEV.	EXT	-	EXTERIOR	MISC	-	MISCELLANEOUS	SS	-	STAINLESS STEEL	TLWP	-	TOP OF LEDGE W.P. (AT GRID)			
BWE	-	BOT. OF WALL ELEV.	FDN	-	FOUNDATION	NHE	-	NORTH HAUNCH ELEVATION	SSE	-	SOUTH STEP ELEVATION	TOD	-	TOP OF DECK			
C/L	-	CENTERLINE	FFE	-	FINISH FLOOR ELEV.	NSE	-	NORTH STEP ELEVATION	SSBE	-	SOLID SLAB BRG ELEV.	TOS	-	TOP OF STEEL			
CIP	-	CAST IN PLACE CONCRETE	FTG	-	FOOTING	NTS	-	NOT TO SCALE	(T)	-	TOP	TPCE	-	TOP OF PRECAST ELEV.			
CANT	-	CANTILEVER	FTTE	-	FUTURE TOP DBL TEE ELEV.	O/C	-	ON CENTER	TATE	-	TOP OF ARCH TRIM ELEV.	TPE	-	TOP OF PIER ELEV.			

PRECAST PRODUCER:



Huffcut Concrete  
4154 123rd Street  
Chippewa Falls, WI 54729  
PH: (715)723-7446  
www.Huffcutt.com

SIGNATURE AND SEAL

ISSUED FOR / ISSUE DATE

FOR SUBMITTAL  
DATE

CANVASBACK

PROJECT ADDRESS

COVERSHEET

SHEET TITLE:

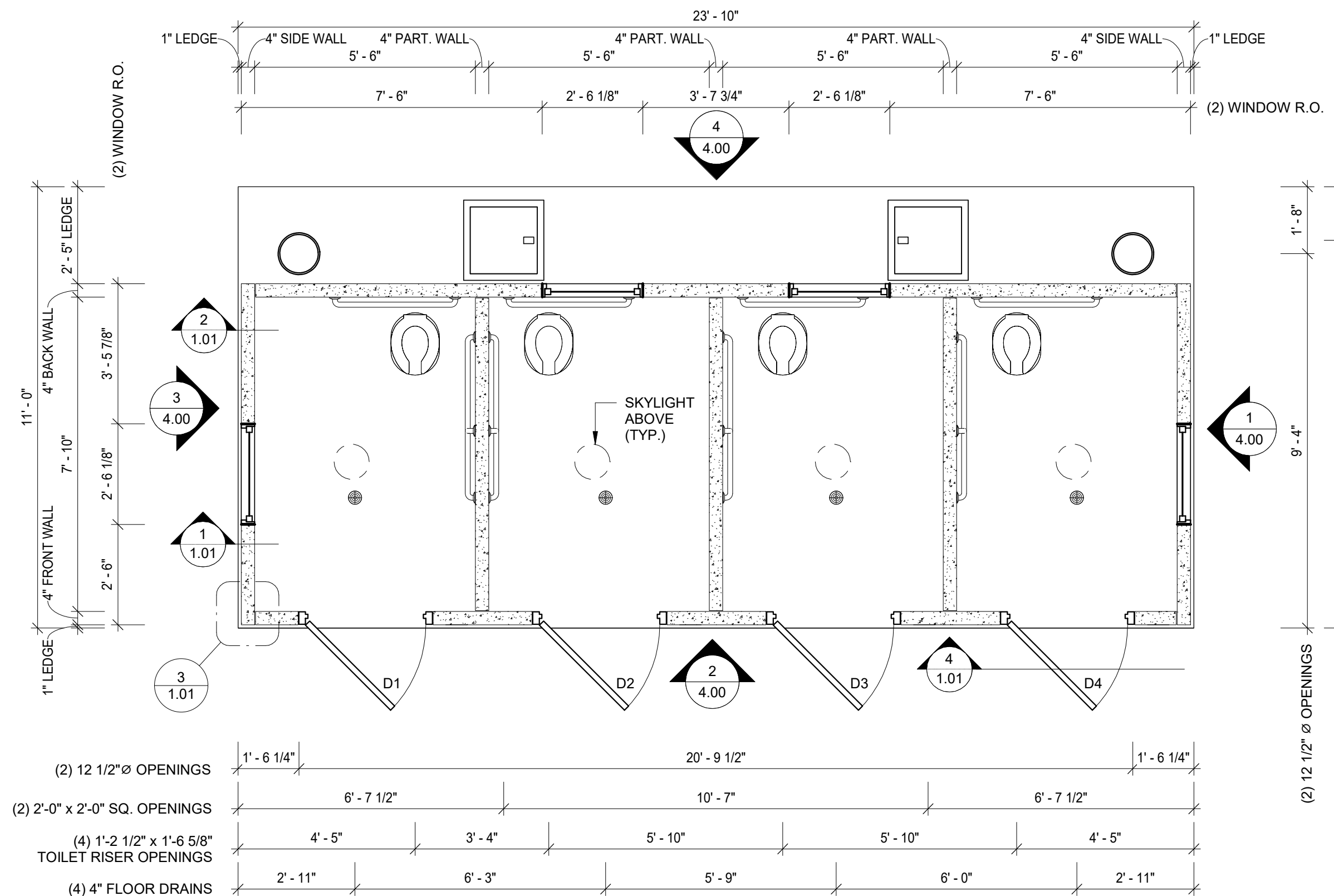
REVISIONS

DRN BY: JS CHK BY: Checker

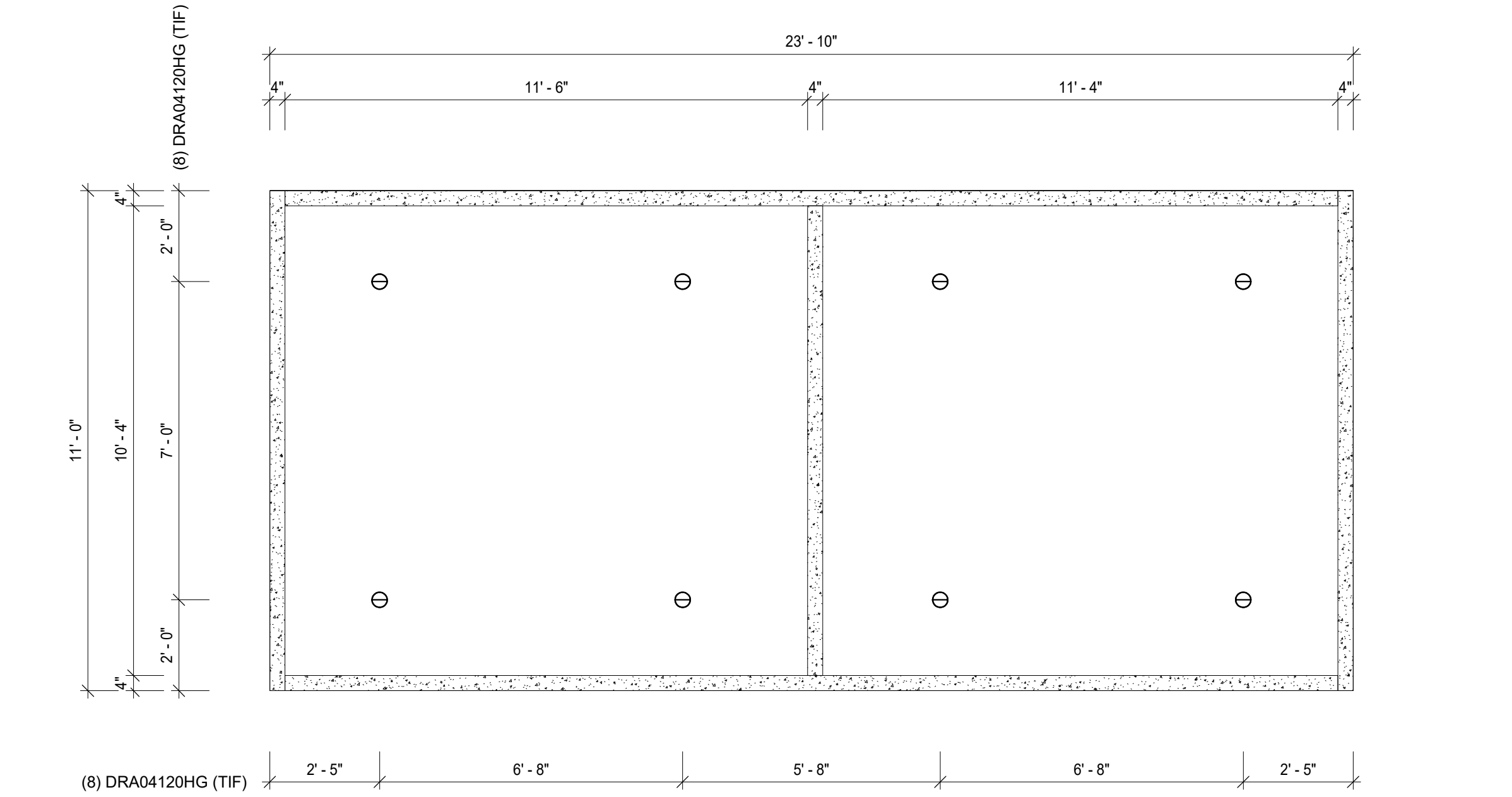
PROJECT NO: 1234

SHEET:

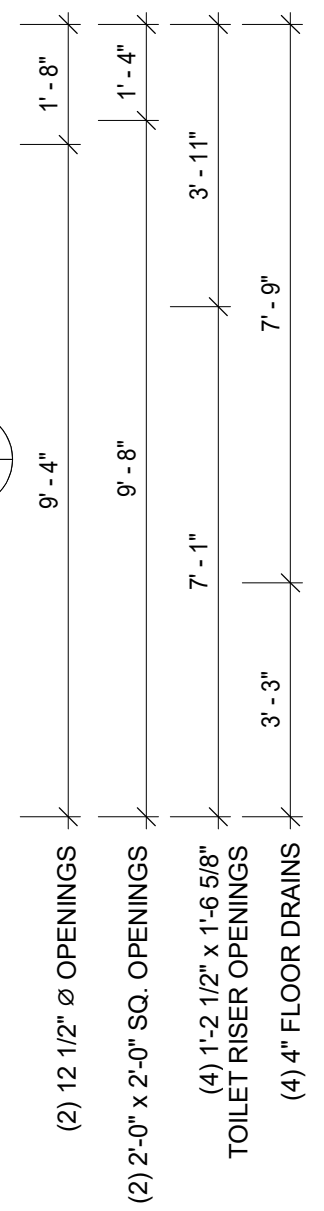
0.00



**1 FLOOR PLAN & FLOOR OPENINGS**  
1.00 3/8" = 1'-0"



**2 VAULT FLOOR PLAN**  
1.00 3/8" = 1'-0"



PRECAST PRODUCER:

Huffcut Concrete  
4154 123rd Street  
Chippewa Falls, WI 54729  
PH: (715)723-7446  
www.Huffcut.com

SIGNATURE AND SEAL

ISSUED FOR / ISSUE DATE  
**FOR SUBMITTAL DATE**

**CANVASBACK**  
PROJECT ADDRESS

FLOOR PLAN, OPENINGS, & DETAILS

SHEET TITLE:

REVISIONS	

DRN BY: JS    CHK BY: CL

PROJECT NO: 1234

SHEET:  
**1.00**

PRECAST PRODUCER:



Huffcut Concrete  
4154 123rd Street  
Chippewa Falls, WI 54729  
PH: (715)723-7446  
www.Huffcut.com

SIGNATURE AND SEAL

ISSUED FOR / ISSUE DATE  
FOR SUBMITTAL  
DATE

CANVASBACK  
PROJECT ADDRESS  
EXTERIOR ELEVATIONS

SHEET TITLE:

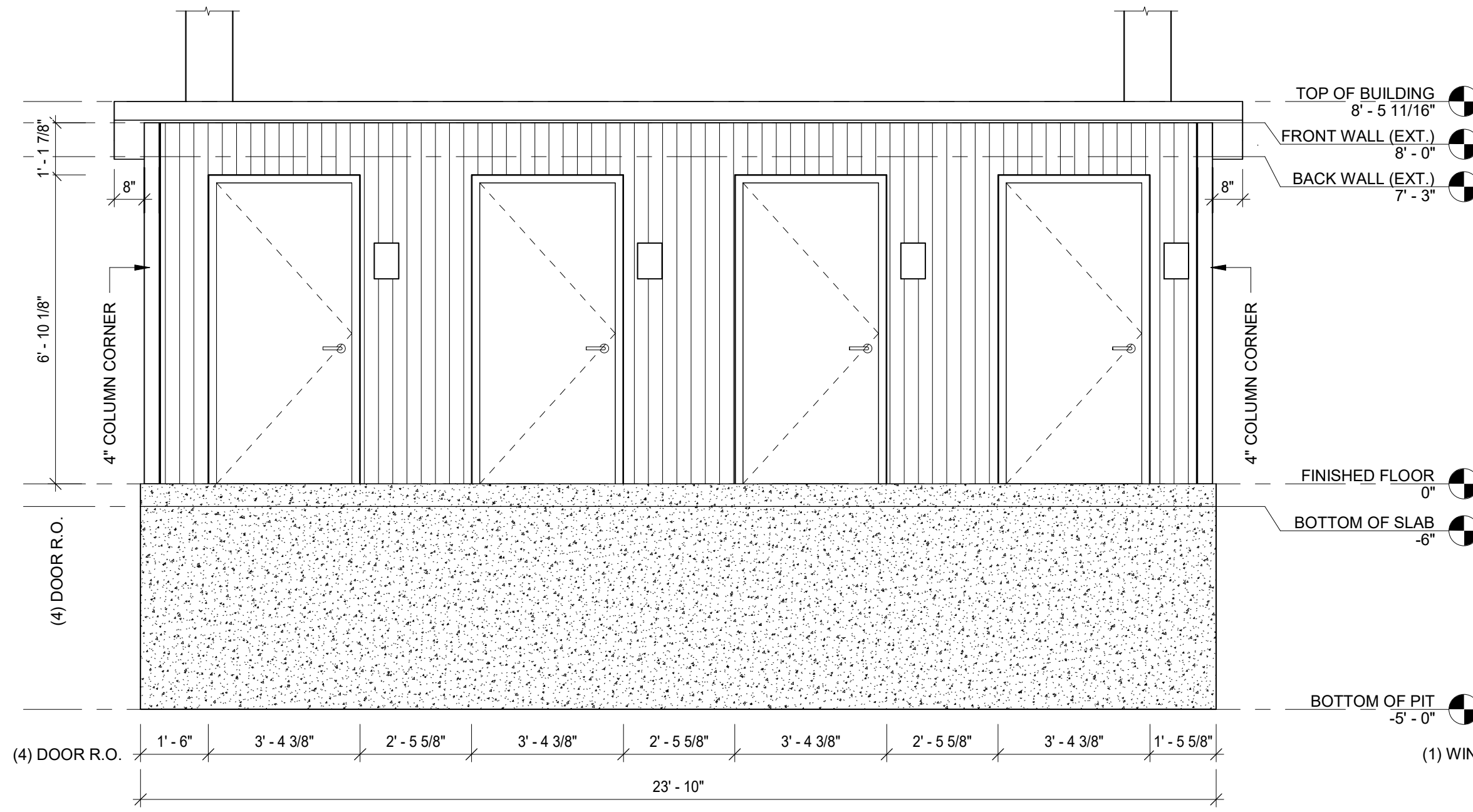
REVISIONS

DRN BY: JS CHK BY: CL

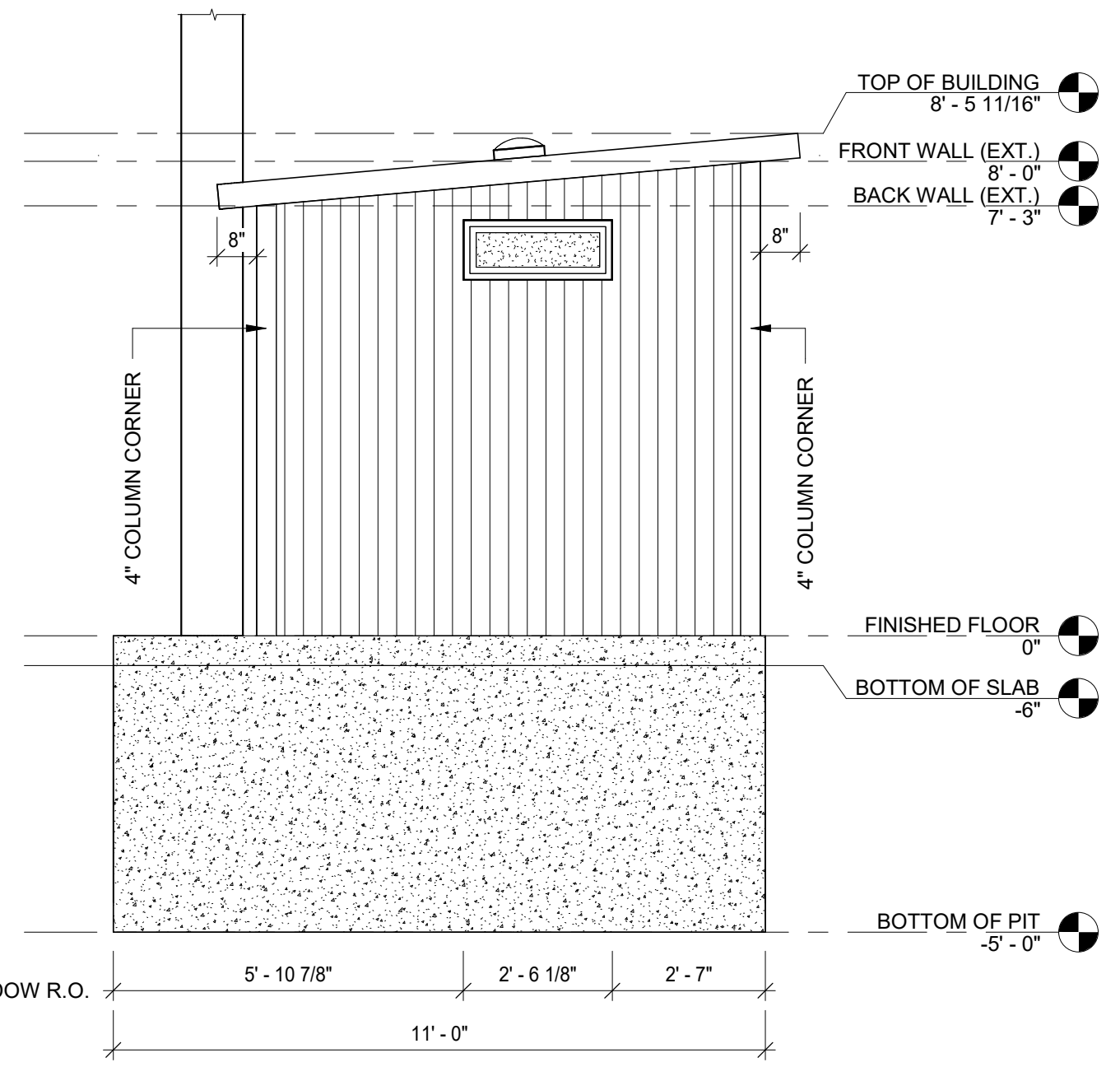
PROJECT NO: 1234

SHEET:

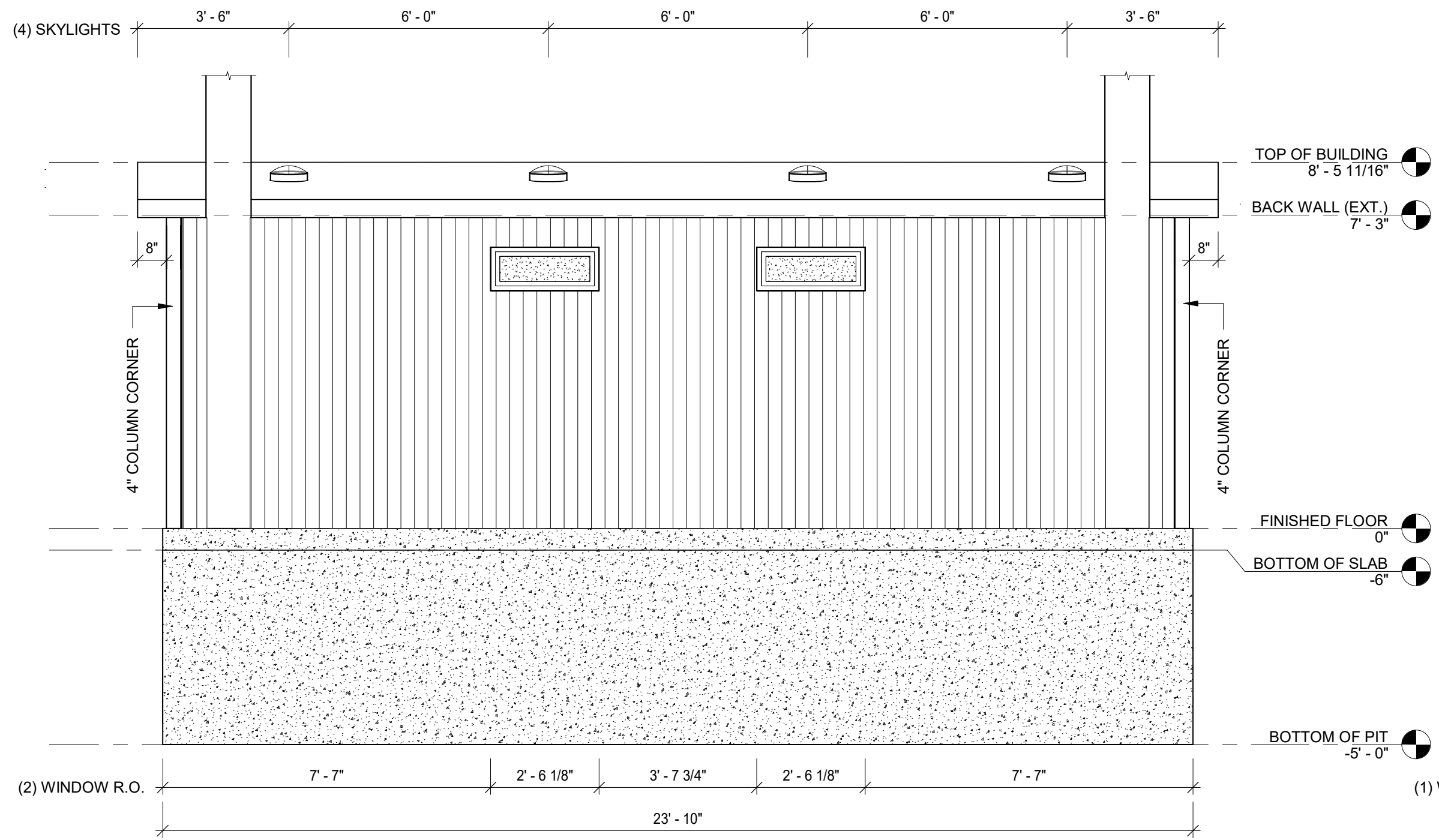
4.00



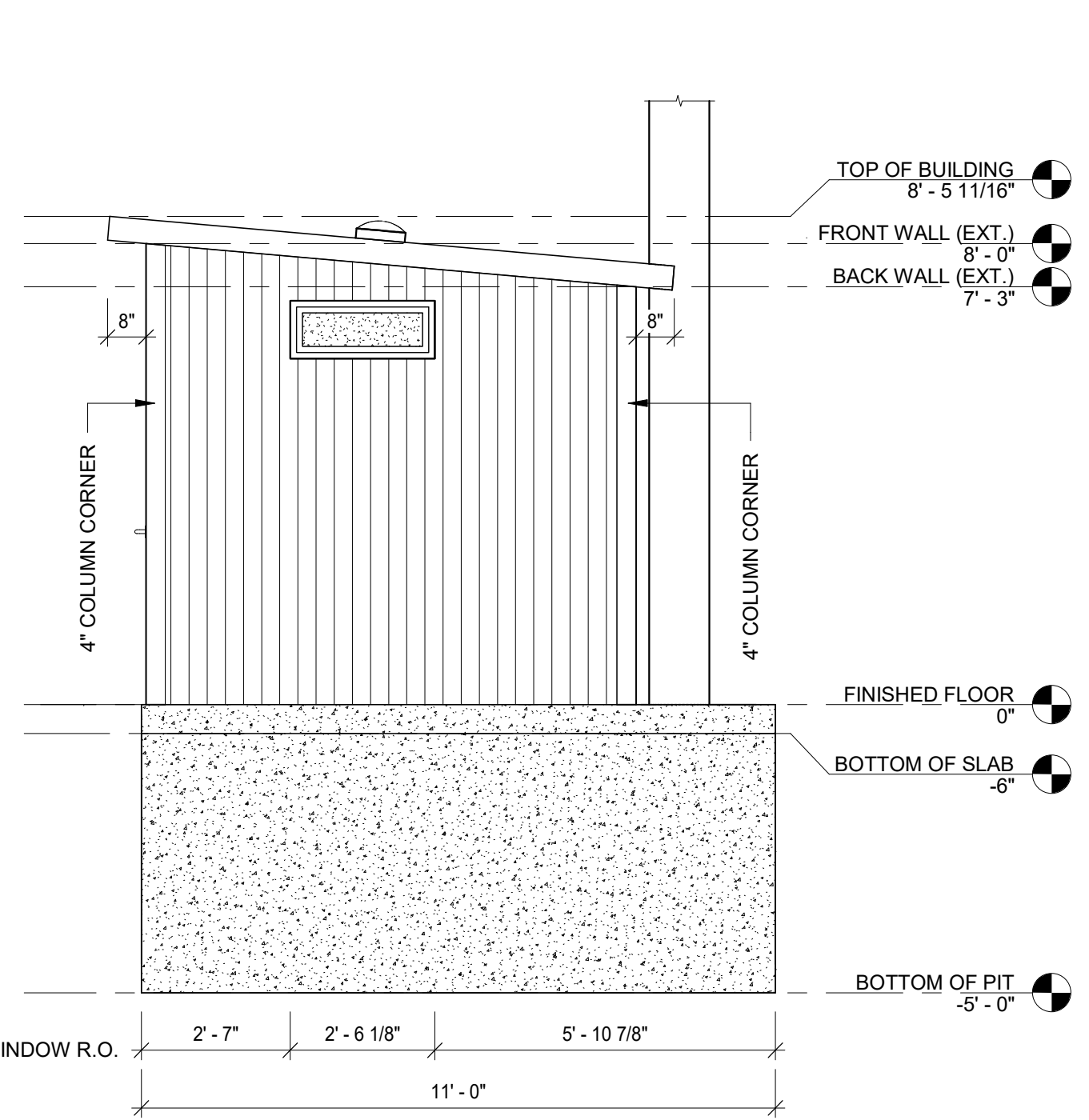
**FRONT ELEVATION**  
3/8" = 1'-0"



**LEFT ELEVATION**  
3/8" = 1'-0"



**REAR ELEVATION**  
3/8" = 1'-0"



**RIGHT ELEVATION**  
3/8" = 1'-0"

Autodesk Docs://Modular Buildings - Stock/CANVASBACK.rvt

2/13/2023 12:16:03 PM

# SPECIFICATIONS

## **PART 1 – GENERAL**

### **1. SCOPE**

1.1. Construction and onsite placement of a prefabricated precast concrete vault toilet building.

### **2. MANUFACTURER**

2.1. Manufacturer shall be Huffcutt Concrete or a pre-approved equal.

2.2. Manufacturer shall be an NPCA Certified Plant or equal with verifiable references demonstrating quality, design and service upon request.

2.3. Manufacturer will provide a written warranty providing 20 years structural, manufacturer's warranty on all hardware and components not produced at precast concrete manufacturer's plant, and 3 years against defects in paint, caulk, and grout.

### **3. DESIGN**

3.1. Building will be manufactured using precast concrete including the roof. Building's structural design will be relevant to the region and properties associated with its final placement. Design will also meet ADA and building code requirements.

### **4. SUBMITTALS**

4.1. Manufacturer shall provide submittals and engineering if requested.

## **PART 2 – PRODUCTS**

### **1. MATERIALS**

#### **1.1. Doors and Frames**

1.1.1. Doors shall be 18ga galvanized metal, louvered with 16ga frames. Doors and frames shall include one coat of rust inhibitive primer and two finish coats of enamel paint.

#### **1.2. Door Hardware**

1.2.1. Aluminum drip cap. Reese or equal.

1.2.2. Door closure with hold open. Falcon or equal.

1.2.3. Stainless hinges with non-removable pin. IVES or equal.

1.2.4. Grade 1 lockset. Function and keying to be verified with owner.

1.2.5. Brush style sweep. Reese or equal.

1.2.6. ADA compliant threshold. Reese or equal.

#### **1.3. Windows**

1.3.1. Vinyl frame, bug screen and security mesh. Parco or equal.

#### **1.4. Interior Hardware**

1.4.1. Stainless 3 roll toilet paper dispensers.

1.4.2. ADA toilet stalls shall have (1) 18" stainless vertical grab bar, (1) 36" stainless horizontal grab bar, (1) 42" stainless horizontal grab bar.

1.4.4. Plastic handicap toilet riser. Romtec or equal.

1.5. Vent Pipes

1.5.1. Vent pipes shall be 12" and made of HDPE. Vent pipe shall extend approximately 36" above the roof line.

1.6. Access/Clean Out Hatch

1.6.1. Access/clean out hatch shall have a 24" x 24" clear opening, made from aluminum and be rated for a 300 psf pedestrian load. Cover shall be hinged with a kickstand to prevent accidental closing. Cover shall include a slam lock with T handle for locking.

1.7. Sealers

1.7.1. Floor shall be sealed using a deep penetrating, high alkali resistant, low volatility product. TK-290 or equal.

1.8. Caulks and Grout

1.8.1. All joints between precast panels shall be caulked using a durable, flexible polyurethane sealant. BASF Sonolastic NP-1 or equal.

1.8.2. Weld plate panel connections shall be grouted flush with interior wall surface. Speed Crete Red Line or equal.

1.9. Vault

1.9.1. Vault shall be lined with a factory installed membrane. MEL-ROL LM or equal.

2. FINISHES

2.1. Interior

2.1.1. Smooth trowel finish.

2.2. Exterior

2.2.1. Exterior wall appearance to be approved by owner using an architectural form liner.

2.2.2. Roof shall be cedar shake architectural form liner.

2.3. Paint

2.3.1. Interior

2.3.1.1. Wall panels shall be primed with a premium quality water based acrylic bonding primer moisture and alkali resistant. Finish coat shall be a high performance acrylic enamel.

2.3.2. Exterior

2.3.2.1. Roof shall be covered with a quality 100% acrylic satin paint. Owner to determine color.

2.3.2.2. Walls shall be covered with a quality concrete stain. Owner to determine color.

2.3.2.3. Doors shall be covered using 2 coats of a high performance 100% acrylic satin enamel. Owner to determine color.

**Part 3 – Execution**

1. PRECAST CONCRETE VAULT TOILET BUILDING

1.1. Building manufacturer shall construct, assemble, and paint at their plant so that it may be transported to the jobsite as a finished module and placed using a crane.

2. ONSITE

2.1. Contractor shall provide adequate access and a level pad for the crane and semis to sit side by side under their own power. Working radius shall be 35' from center pin on crane.

2.2. Contractor shall provide all excavation, backfilling, and finish grading for vault toilet building. In addition contractor shall provide suitable bedding of sand or granular material for the vault.

2.3. Manufacturer will install HDPE vent pipes and perform any shipping and handling adjustments and repairs.

